

LOC I-BER	APP CRS	Rwy ldg	<b>6190</b>
<b>108.9</b>	<b>234°</b>	TDZE	<b>18</b>
		Apt Elev	<b>20</b>

# ILS Y or LOC Y RWY 23

ADAK (ADK) (PADK)

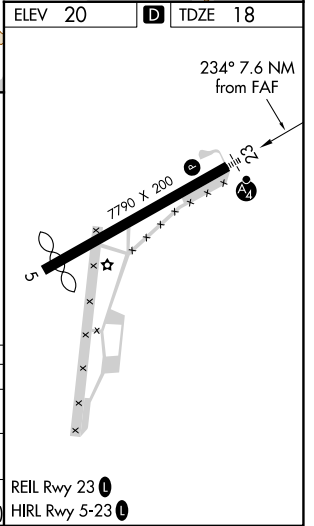
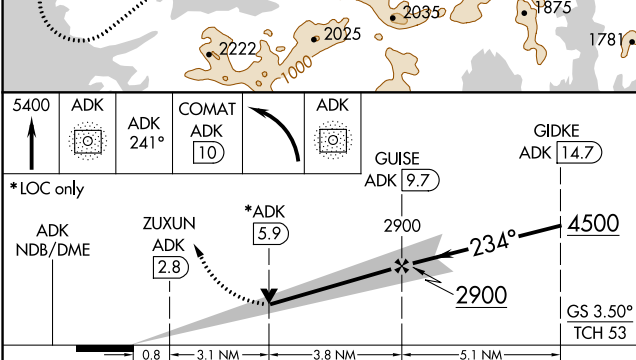
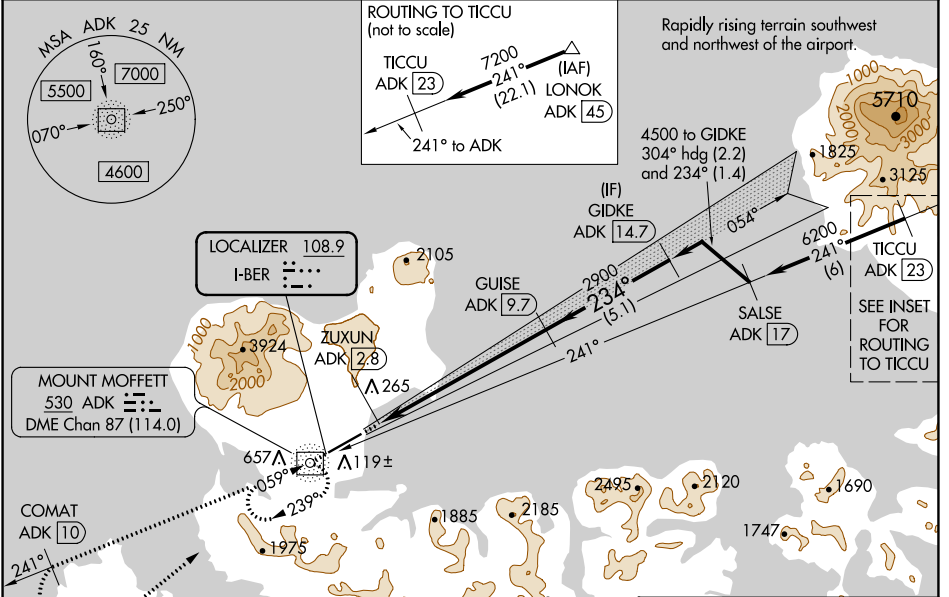
ADF and DME required.

**⚠** Circling NA at night. Circling NA northwest of Rwy 5-23.  
**⚠** Rwy 23 helicopter visibility reduction below 3/4 SM NA.  
 DME from ADK NDB/DME. Simultaneous reception of I-BER and ADK DME required. Cat E for USAF/USN use only.

MALS

MISSED APPROACH: Climb to 5400 direct ADK NDB/DME and on the 241° bearing from ADK NDB/DME to COMAT/ADK 10 DME and left turn direct ADK NDB/DME and hold.

AWOS-3P <b>134.5</b>	ANCHORAGE CENTER <b>126.4 254.3</b>	CTAF <b>122.9 0</b>
-------------------------	--	------------------------



CATEGORY	A	B	C	D	E
S-ILS 23	1572-5 1554 (1600-5)				
S-LOC 23	1520-1 1/4 1502 (1500-1 1/4)	1520-1 1/2 1502 (1500-1 1/2)	1520-3 1502 (1500-3)		
CIRCLING	1520-1 1/4 1500 (1500-1 1/4)	1520-1 1/2 1500 (1500-1 1/2)	1520-3 1500 (1500-3)	2400-3 2380 (2400-3)	2440-3 2420 (2500-3)

AK, 31 OCT 2024 to 26 DEC 2024

AK, 31 OCT 2024 to 26 DEC 2024