


TACAN BER Chan 77 (113.0)	APP CRS 233°	Rwy ldg 6190 TDZE 17 Apt Elev 20
---	------------------------	---

TACAN RWY 23

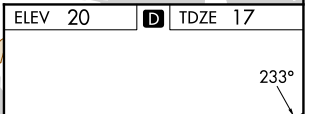
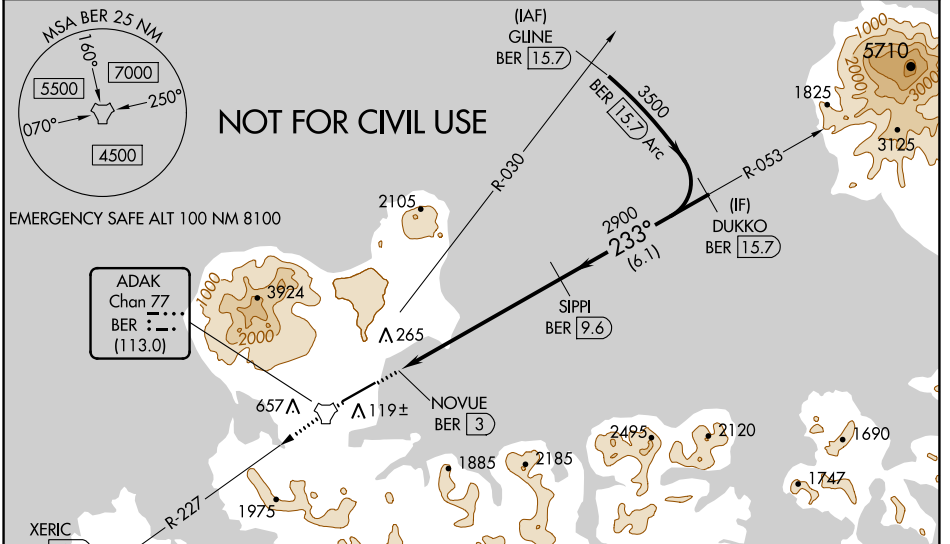
ADAK (ADK)(PADK)

▼ Circling NA northwest of Rwy 5-23. Rwy 23 helicopter visibility reduction below RVR 5000 NA. Straight-in Rwy 23 at night, operational VGSI required, remain on or above VGSI glidepath until threshold.
▲ USAF only: When VGSI inop, Straight-in Rwy 23 authorized at night with command approval.
 Circling NA at night - unlit terrain 21 feet MSL 200 feet from threshold, 551 feet right of centerline. For inop ALS, increase S-23* Cat C/D/E visibility to 2½ SM.

MALS 



MISSED APPROACH: Climb to 4300 direct BER TACAN and continue on BER R-227 direct XERIC/BER 10.4 DME and hold, continue climb-in-hold to 4300.
 *Missed approach requires minimum climb of 375 feet per NM to 2800.

AWOS-3P 134.5	ANCHORAGE CENTER 126.4 254.3	CTAF 122.9
-------------------------	--	----------------------



4300 BER	BER R-227	XERIC BER 10.4	SIPPI BER 9.6	DUKKO BER 15.7
BER TACAN	NOVUE BER 3	$\leq 3.50^\circ$ TCH 53		
1 NM		6.6 NM		6.1 NM

CATEGORY	A	B	C	D	E
s-23*	800/50	783 (800-1)	800-2	783 (800-2)	
s-23	1620-1¼ 1603 (1600-1¼)	1620-1½ 1603 (1600-1½)	1620-3	1603 (1600-3)	
C CIRCLING	1620-1¼ 1600 (1600-1¼)	1620-1½ 1600 (1600-1½)	1620-3 1600 (1600-3)	2440-3	2420 (2500-3)

ELEV 20	D TDZE 17
REIL Rwy 23 	HIRL Rwy 5-23 

AK, 31 OCT 2024 to 26 DEC 2024

AK, 31 OCT 2024 to 26 DEC 2024