

ILS or LOC/DME RWY 28

LOC I-SYA 110.1	APCH CRS 287°	Rwy Idg 10,004 TDZE 93 Arprt Elev 98
---------------------------	-------------------------	---

[USAF]

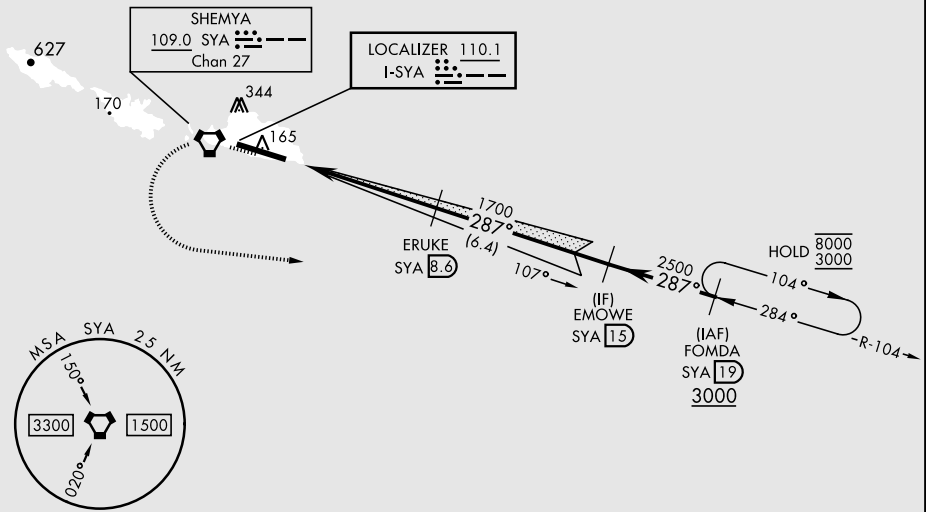
EARECKSON AS (PASY)

* Circling not authorized N of Rwy 10-28. SALS  MISSED APPROACH: Climb to 600, then climbing left turn to 3000 direct FOMDA and hold.

ANCHORAGE CENTER
119.1 339.8

CTAF
127.2 352.05

CAUTION: Numerous obstructions in area N of Rwy 10-28.
Missed approach requires use of RNAV or ATC RADAR monitoring.

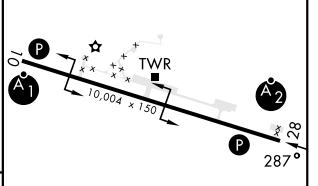
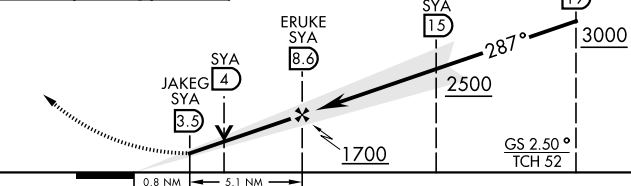



AK, 31 OCT 2024 to 26 DEC 2024


AK, 31 OCT 2024 to 26 DEC 2024

EMERG SAFE ALT 100 NM 5400

600	3000	FOMDA SYA 19	VGSI and ILS glidepath not coincident (VGSI Angle 2.50/TCH 46).	FOMDA SYA 19	ELEV 98	TDZE 93
-----	------	---------------------	---	---------------------	---------	---------



CATEGORY	A	B	C	D	E
S-ILS 28	293-1		200	(200-1)	
S-LOC 28	460-1		367	(400-1)	
 CIRCLING*	460-1 362 (400-1)	560-1 462 (500-1)	560-1 1/2 465 (500-1 1/2)	660-2 562 (600-2)	680-2 582 (600-2)

HIRL Rwy 10-28 
REIL Rwy 10 and 28

ILS or LOC/DME RWY 28