

SHEMYA I, ALEUTIAN I, ALASKA

# RNAV (GPS) RWY 10

APCH CRS	Rwy Idg <b>10,004</b>
<b>107°</b>	TDZE <b>98</b>
	Arpt Elev <b>98</b>

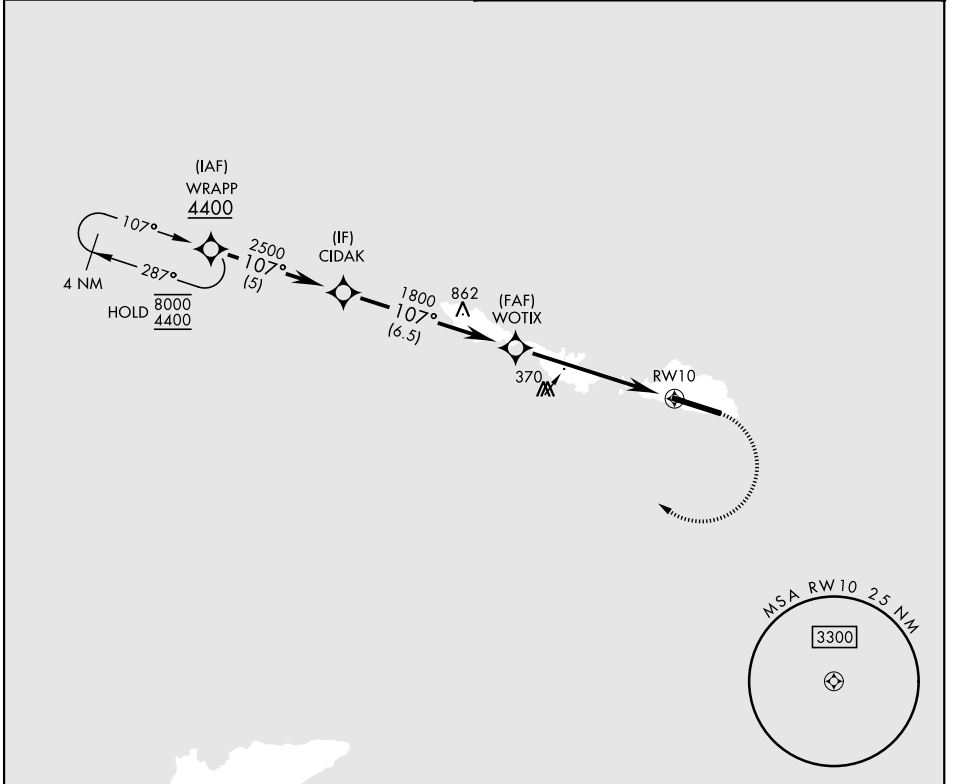
[USAF]

EARECKSON AS (PASY)

RNP APCH - GFS	ALSF-1	MISSED APPROACH: Climbing right turn to 4400 direct WRAPP and hold, continue climb-in-hold to 4400.
*When ALS inop, increase CAT CDE vis to 1½ miles. **Circling not authorized N of Rwy 10-28.		

ANCHORAGE CENTER  
**119.1 339.8**

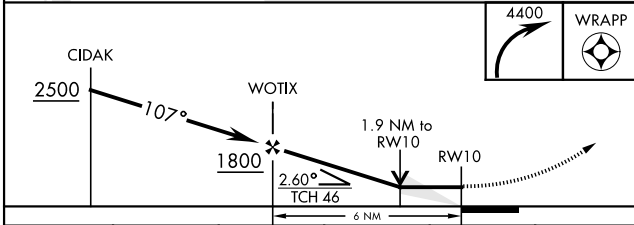
CTAF  
**127.2 352.05**



AK, 31 OCT 2024 to 26 DEC 2024

AK, 31 OCT 2024 to 26 DEC 2024

2280	ELEV 98	TDZE 98
EMERG SAFE ALT 100 NM 5400		



ELEV 98		TDZE 98	
CATEGORY	A	B	E
LNAV MDA *	640-1 542 (600-1)	640-1½ 542 (600-1½)	680-2
CIRCLING **	640-1 542 (600-1)	542 (600-1½) 562 (600-2)	582 (600-2)
			HIRL Rwy 10-28 REIL Rwy 10 and 28

SHEMYA I, ALEUTIAN I, ALASKA

52° 43' N-174° 07' E

EARECKSON AS (PASY)

Amdt 1 05SEP24

# RNAV (GPS) RWY 10