

SHEMYA I, ALEUTIAN I, ALASKA

# VOR/DME or TACAN RWY 10

VORTAC SYA <b>109.0</b> Chan <b>27</b>	APCH CRS <b>092°</b>	Rwy ldg <b>10,004</b> TDZE <b>98</b> Arprt Elev <b>98</b>
--	-------------------------	---

[USAF]

EARECKSON AS (PASY)

\* When ALS inop, increase CAT AB vis to 1½ miles;  
CAT CDE vis to 1¼ miles.  
\*\* Circling not authorized N of Rwy 10-28.

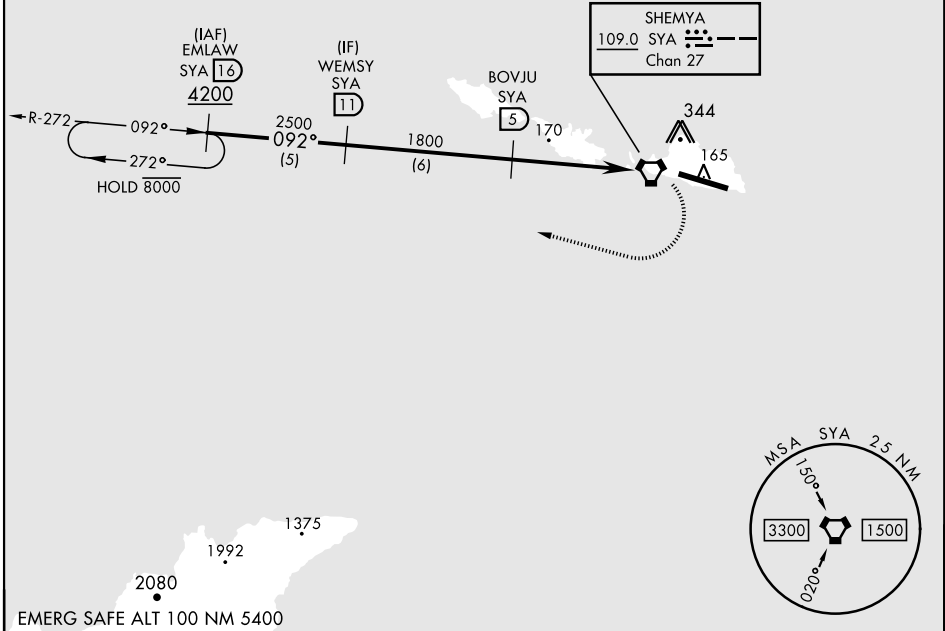


MISSED APPROACH: Climb to 1200, then climbing right turn to 4200, intercept SYA R-272 direct EMLAW and hold.

ANCHORAGE CENTER  
**119.1 339.8**

CTAF  
**127.2 352.05 0**

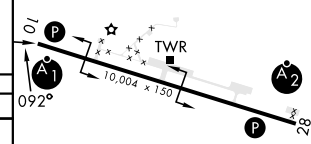
CAUTION: Numerous obstructions in area N of Rwy 10-28.  
Missed approach requires use of RNAV or ATC RADAR monitoring.



AK, 31 OCT 2024 to 26 DEC 2024

AK, 31 OCT 2024 to 26 DEC 2024

WEMS SYA (11)	BOVJU SYA (5)	SYA VORTAC	ELVEK SYA (0.3)	SYA (0.1)	EMLAW R-272 (16)	ELEV 98	TDZE 98
2500	1800	1800	4.9 NM	1.2 NM			
092°		2.56°		TCH 46			
CATEGORY	A	B	C	D	E		
S-10 *	640-1	542 (600-1)	640-1½	542 (600-1½)			
CIRCLING **	640-1½	542 (600-1½)	640-1¾	542 (600-1¾)	582 (600-2)	HIRL Rwy 10-28 REIL Rwy 10 and 28	



SHEMYA I, ALEUTIAN I, ALASKA  
Amdt 7 05SEP24

52°43'N-174°07'E

EARECKSON AS (PASY)

# VOR/DME or TACAN RWY 10