

NDB/DME ILI <b>411</b>	APP CRS <b>006°</b>	Rwy Idg <b>4800</b> TDZE <b>179</b> Apt Elev <b>192</b>
Chan <b>91 (114.4)</b>		

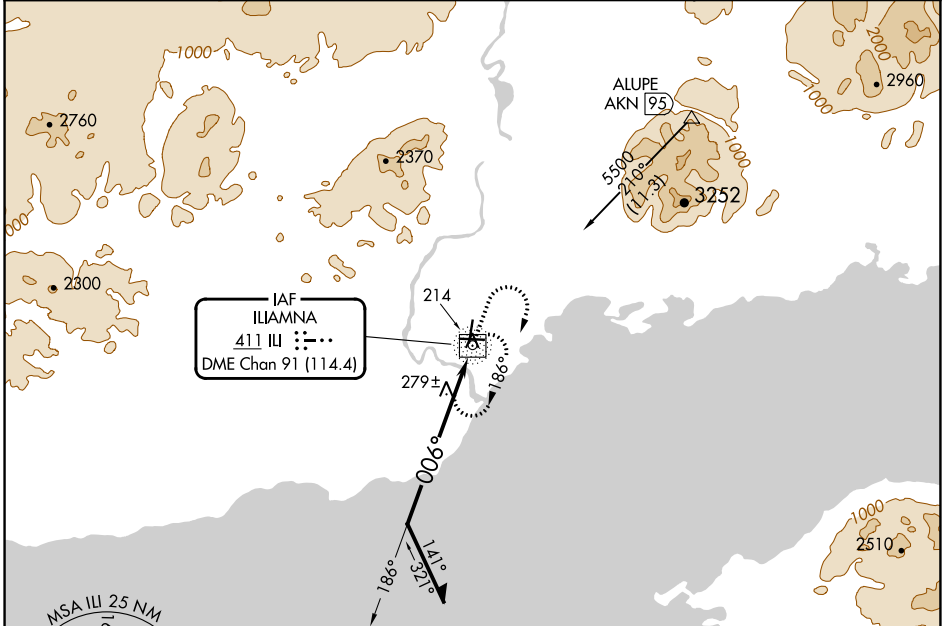
# NDB RWY 36

ILIAMNA (ILI) (PAIL)

**⚠** Circling Rwy 18 NA at night. Rwy 36 helicopter visibility reduction below 3/4 SM NA. Circling NA to waterways N, S, E, W.  
**❄** -26°C

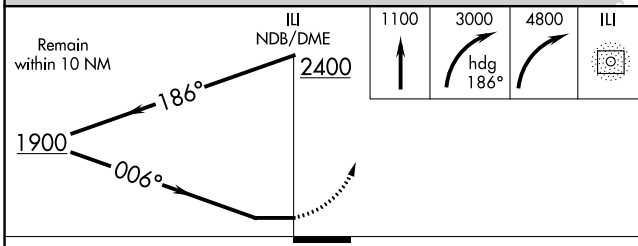
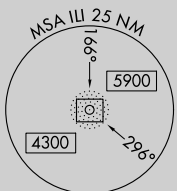
**MISSED APPROACH:** Climb to 1100 then climbing right turn to 3000 via heading 186° then climbing right turn to 4800 direct ILI NDB/DME and hold, continue climb-in-hold to 4800.

AFIS <b>134.95</b>	ANCHORAGE CENTER <b>118.8</b>	ILIAMNA RADIO <b>123.6 (CTAF) 0</b>
-----------------------	----------------------------------	--



AK, 31 OCT 2024 to 26 DEC 2024

AK, 31 OCT 2024 to 26 DEC 2024



ELEV 192	TDZE 179
----------	----------

REIL Rwys 26 and 36  
MIRL Rwys 8-26 and 18-36

WATER RWYS:  
N-S 2892 X 400  
E-W 2998 X 400

CATEGORY	A	B	C	D
S-36	680-1	501 (500-1)	680-1½	501 (500-1½)
<b>C</b> CIRCLING	740-1	548 (600-1)	820-1¾ 628 (700-1¾)	1700-3 1508 (1600-3)