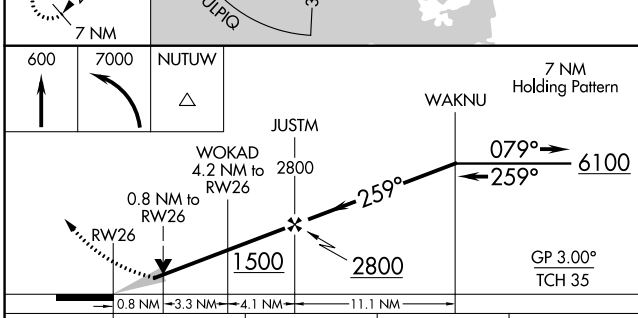
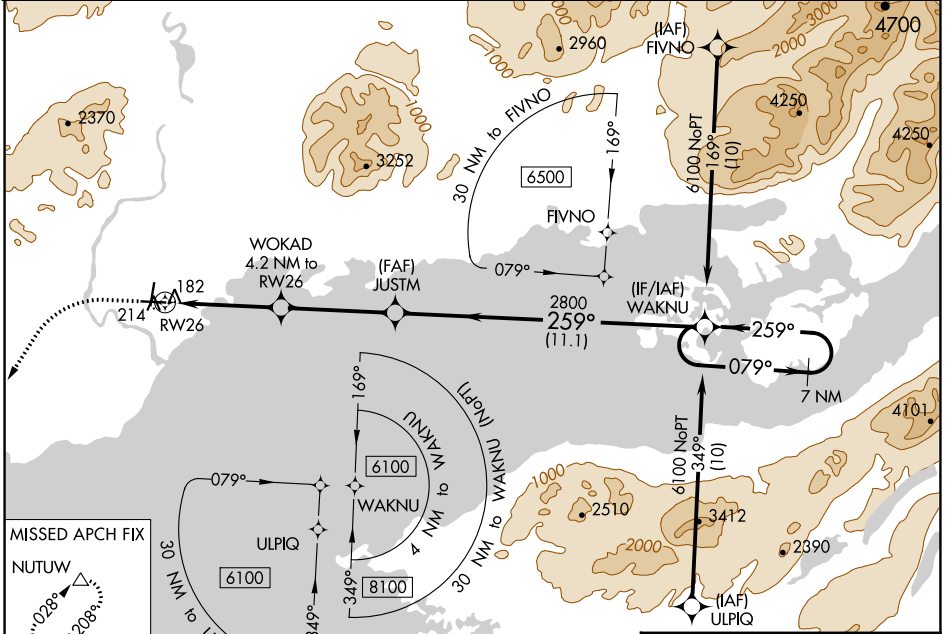


WAAS CH <b>45910</b> <b>W26A</b>	APP CRS <b>259°</b>	Rwy Idg <b>5086</b> TDZE <b>174</b> Apt Elev <b>192</b>
--	------------------------	---

# RNAV (GPS) RWY 26

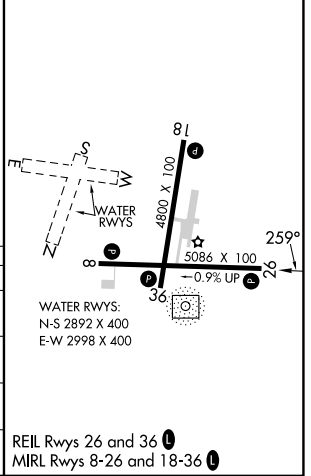
ILIAMNA (ILI) (PAIL)

RNP APCH - GPS.		MISSED APPROACH: Climb to 600, then climbing left turn to 7000 direct NUTUW and hold, continue climb-in-hold to 7000.
<p>▼ For uncompensated Baro-VNAV systems, procedure NA below -21°C or above 54°C. When local altimeter setting not received, procedure NA.</p> <p>⚠ -26°C Circling NA to waterways N, S, E, W.</p>		
AFIS <b>134.95</b>	ANCHORAGE CENTER <b>118.8</b>	ILIAMNA RADIO <b>123.6 (CTAF)</b>



ELEV 192	TDZE 174
----------	----------

CATEGORY	A	B	C	D
LPV DA		424-1	250 (300-1)	
LNAV/VNAV DA		424-1	250 (300-1)	
LNAV MDA		440-1	266 (300-1)	
CIRCLING	740-1	548 (600-1)	820-1 <sup>3</sup> / <sub>4</sub> 628 (700-1 <sup>3</sup> / <sub>4</sub> )	1700-3 1508 (1600-3)



AK, 31 OCT 2024 to 26 DEC 2024

AK, 31 OCT 2024 to 26 DEC 2024