

RNAV (GPS) RWY 8 ILIAMNA (ILI) (PAIL)

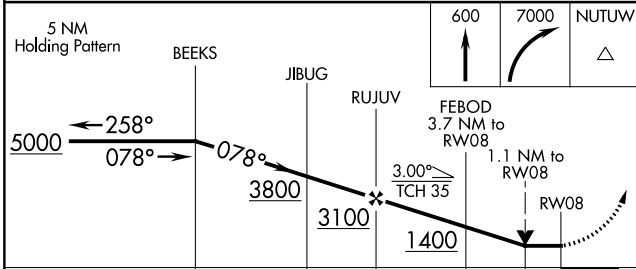
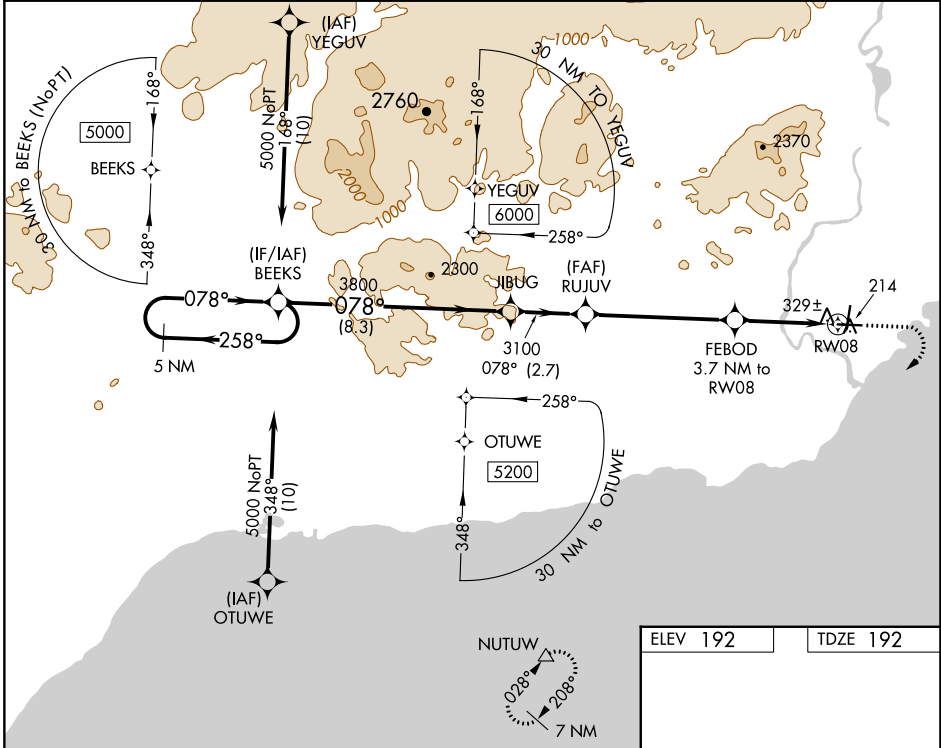
APP CRS 078°	Rwy Idg 5086
	TDZE 192
	Apt Elev 192

RNP APCH - GPS.

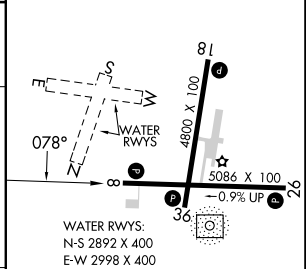
- When local altimeter setting not received, procedure NA.
- Rwy 8 helicopter visibility reduction below 3/4 SM NA.
- 26°C
- Circling NA to waterways N, S, E, W.

MISSED APPROACH: Climb to 600, then climbing right turn to 7000 direct NUTUW and hold, continue climb-in-hold 7000.

AFIS 134.95	ANCHORAGE CENTER 118.8	ILIAMNA RADIO 123.6 (CTAF) 0
-----------------------	----------------------------------	----------------------------------------



ELEV 192	TDZE 192
----------	----------



CATEGORY	A	B	C	D
LNNAV MDA	580-1	388 (400-1)	580-1 1/8	388 (400-1 1/8)
CIRCLING	740-1	548 (600-1)	820-1 3/4 628 (700-1 3/4)	1700-3 1508 (1600-3)

REIL Rwy 26 and 36

MIRL Rwy 8-26 and 18-36

AK, 31 OCT 2024 to 26 DEC 2024

AK, 31 OCT 2024 to 26 DEC 2024