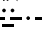
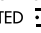


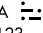
(AMOTT.AMOTT4) 24025  
**AMOTT FOUR ARRIVAL**


TED STEVENS ANCHORAGE INTL (ANC)(PANC)  
 AL-1500 (FAA) ANCHORAGE, ALASKA


ANCHORAGE APP CON  
 126.4 270.25  
 ANC/PANC D-ATIS  
 135.5  
 MRI/PAMR ATIS  
 124.25  
 PAED ATIS\*  
 124.3 273.5

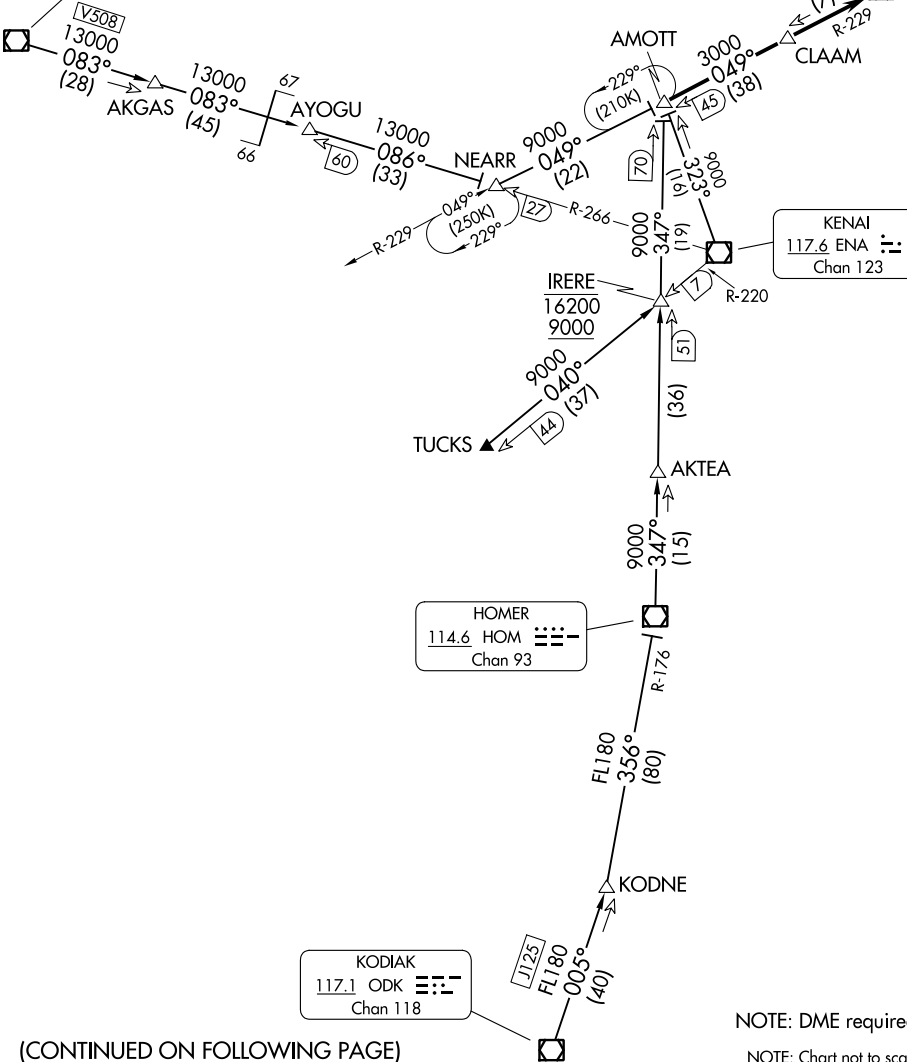
SPARREVOHN  
 117.2 SQA   
 Chan 119

ANCHORAGE  
 113.15 TED   
 Chan 78(Y)  
 3000

KENAI  
 117.6 ENA   
 Chan 123

HOMER  
 114.6 HOM   
 Chan 93

KODIAK  
 117.1 ODK   
 Chan 118



AK, 31 OCT 2024 to 26 DEC 2024

AK, 31 OCT 2024 to 26 DEC 2024

(CONTINUED ON FOLLOWING PAGE)

NOTE: DME required.  
 NOTE: Chart not to scale.

**AMOTT FOUR ARRIVAL**  
 (AMOTT.AMOTT4) 29MAR18

ANCHORAGE, ALASKA  
 TED STEVENS ANCHORAGE INTL (ANC)(PANC)

ARRIVAL ROUTE DESCRIPTION

HOMER TRANSITION (HOM.AMOTT4): From over HOM VOR/DME on HOM R-347 to AMOTT. Thence. . . .

KENAI TRANSITION (ENA.AMOTT4): From over ENA VOR/DME on ENA R-323 to AMOTT. Thence. . . .

KODIAK TRANSITION (ODK.AMOTT4): From over ODK VOR/DME on ODK R-005 to KODNE, then on HOM R-176 to HOM VOR/DME, then on HOM R-347 to AMOTT. Thence. . . .

SPARREVOHN TRANSITION (SQA.AMOTT4): From over SQA VOR/DME on SQA R-083 to AKGAS, then on SQA R-083 and ENA R-266 to AYOGU, then on ENA R-266 to NEARR, then on TED R-229 to AMOTT. Thence. . . .

TUCKS TRANSITION (TUCKS.AMOTT4): From over TUCKS on ENA R-220 to IRERE, then on HOM R-347 to AMOTT. Thence. . . .

. . . .from over AMOTT on TED R-229 to cross TED VOR/DME at 3000.  
Expect RADAR vectors to final approach course after AMOTT.

AK, 31 OCT 2024 to 26 DEC 2024

AK, 31 OCT 2024 to 26 DEC 2024