

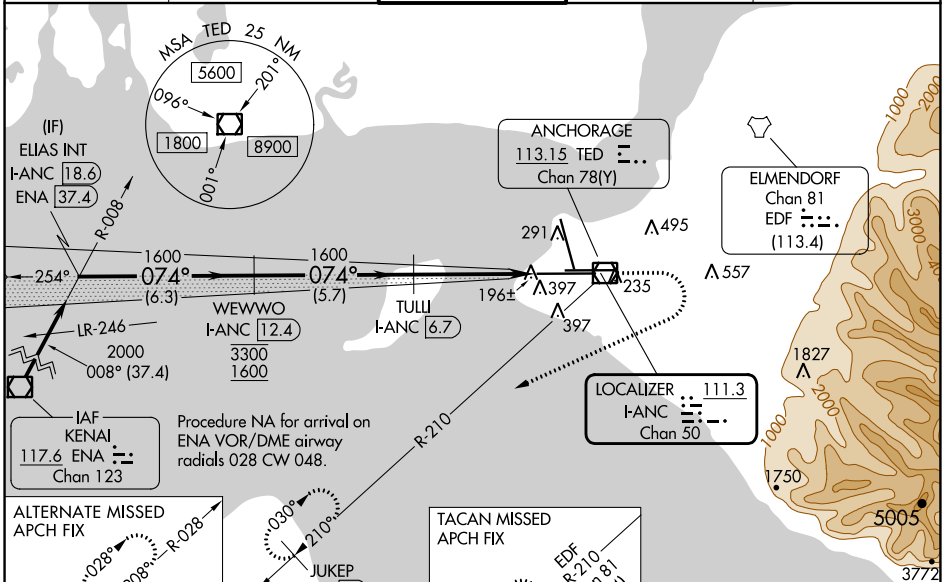
LOC/DME I-ANC <b>111.3</b> Chan <b>50</b>	APP CRS <b>074°</b>	Rwy ldg <b>12400</b> TDZE <b>132</b> Apt Elev <b>151</b>
---	------------------------	--

# ILS RWY 7R (SA CAT I)

TED STEVENS ANCHORAGE INTL (ANC) (PANC)

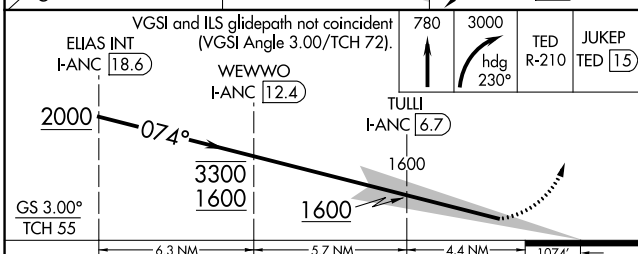
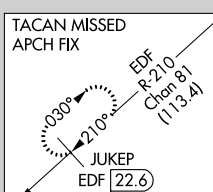
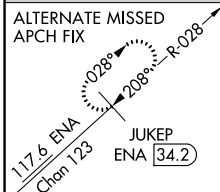
DME required.	ALSF-2 	MISSED APPROACH: Climb to 780 then climbing right turn to 3000 on heading 230° and on TED VOR/DME R-210 to JUKEP/TED 15 DME and hold. (TACAN aircraft climb to 780 then climbing right turn to 3000 on heading 230° and EDF TACAN R-210 to JUKEP/EDF 22.6 DME and hold).
-21°C Requires specific OPSPEC, MSPEC, or LOA approval. Rwy 7L threshold 6140 feet east of Rwy 7R threshold.		

D-ATIS <b>135.5</b>	ANCHORAGE APP CON <b>118.6 290.5</b>	ANCHORAGE TOWER <b>118.3 257.8</b>	GND CON <b>121.9 338.25</b>	CLNC DEL <b>119.4 323.1</b>
------------------------	---	---------------------------------------	--------------------------------	--------------------------------

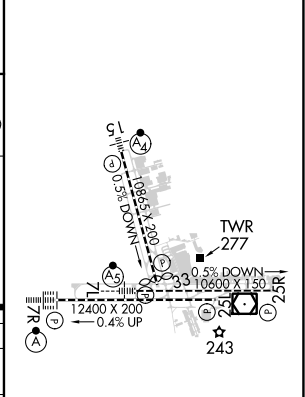


Procedure NA for arrival on ENA VOR/DME airway radials 028 CW 048.

IAF KENAI 117.6 ENA Chan 123



ELEV 151	<b>D</b> TDZE 132
----------	-------------------



CATEGORY	A	B	C	D
S-ILS 7R	RA 245/14 150 DA 282			

## SA CATEGORY I ILS - SPECIAL AIRCREW & AIRCRAFT CERTIFICATION REQUIRED

REIL Rwy 33  
TDZ/CL Rwy 7L and 7R  
HIRL all Rwy

AK, 31 OCT 2024 to 26 DEC 2024

AK, 31 OCT 2024 to 26 DEC 2024