

LOC/DME I-ANC <b>111.3</b> Chan <b>50</b>	APP CRS <b>074°</b>	Rwy ldg <b>12400</b>	7L <b>10600</b>
		TDZE <b>132</b>	<b>128</b>
		Aprt Elev <b>151</b>	<b>151</b>

# ILS or LOC RWY 7R

TED STEVENS ANCHORAGE INTL (ANC) (PANC)

**DME required.**

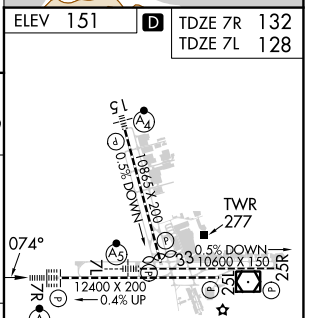
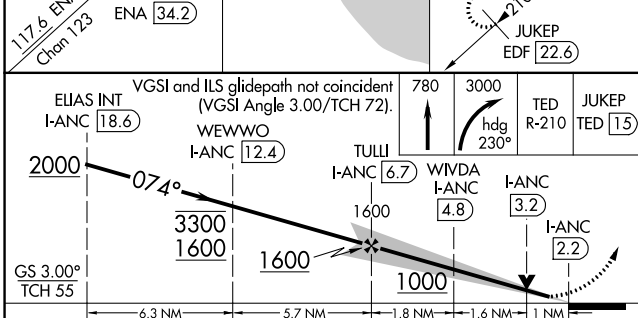
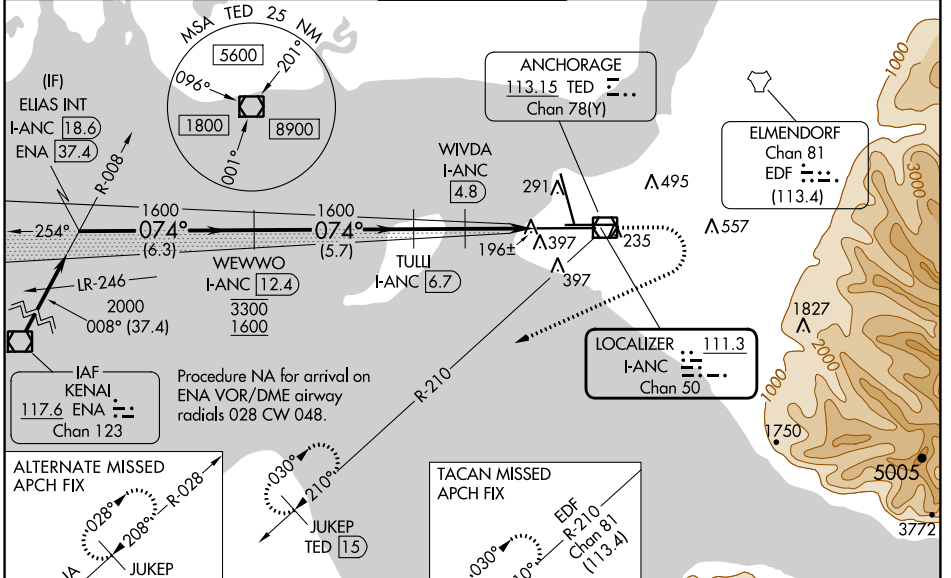
**▼** For inop ALS, increase S-ILS 7R Cat E visibility to RVR 4000, S-LOC 7R Cat E visibility to RVR 6000, and Sidestep Rwy 7L Cat E visibility to 2 SM. Rwy 7L threshold 6140 feet east of Rwy 7R threshold.

**▲** -21°C

**ALSIF-2 Rwy 7R** **MALSR Rwy 7L**

**MISSED APPROACH:** Climb to 780 then climbing right turn to 3000 on heading 230° and on TED VOR/DME R-210 to JUKEP/TED 15 DME and hold. (TACAN aircraft climb to 780 then climbing right turn to 3000 on heading 230° and EDF TACAN R-210 to JUKEP/EDF 22.6 DME and hold).

D-ATIS <b>135.5</b>	ANCHORAGE APP CON <b>118.6 290.5</b>	ANCHORAGE TOWER <b>118.3 257.8</b>	GND CON <b>121.9 338.25</b>	CLNC DEL <b>119.4 323.1</b>
------------------------	---	---------------------------------------	--------------------------------	--------------------------------



CATEGORY	A	B	C	D	E
S-ILS 7R	332/18 200 (200-½)				
S-LOC 7R	520/24	388 (400-½)	520/35 388 (400-¾)		
SIDESTEP 7L	520/55 392 (400-1)		520-1½ 392 (400-1½)		
CIRCLING	700-1 549 (600-1)	800-1¾ 649 (700-1¾)		920-2½ 769 (800-2½)	920-2¾ 769 (800-2¾)

REIL Rwy 33  
 TDZ/CL Rwy 7L and 7R  
 HIRL all Rwy

AK, 31 OCT 2024 to 26 DEC 2024

AK, 31 OCT 2024 to 26 DEC 2024