

APP CRS	Rwy Idg	10400
329°	TDZE	121
	Apt Elev	151

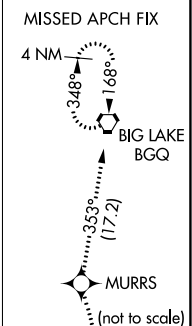
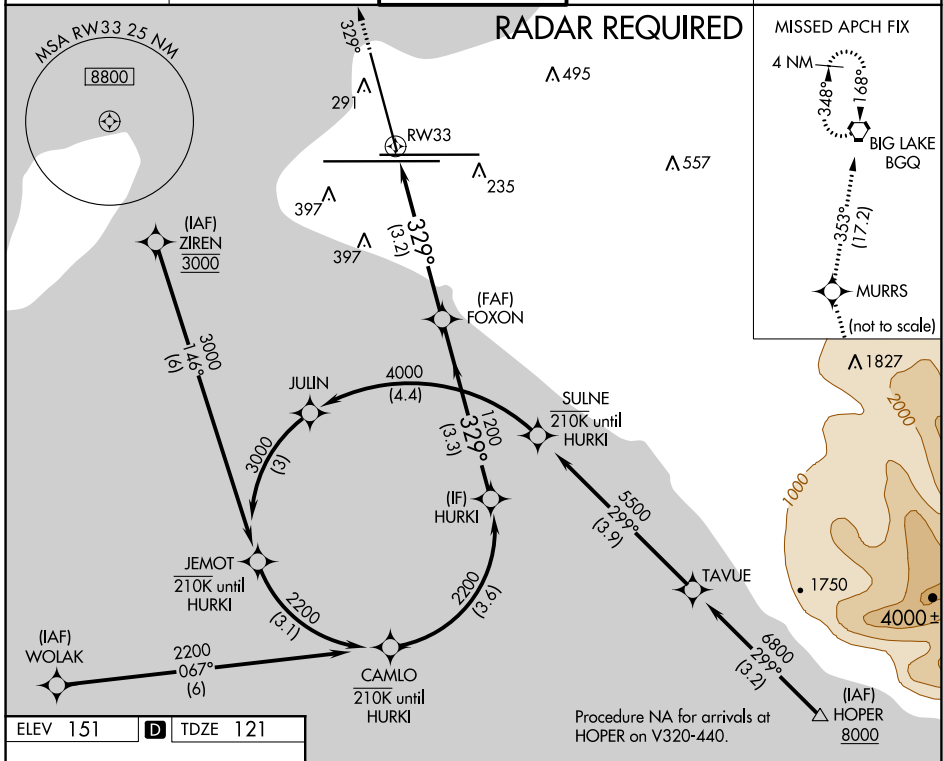
RNAV (RNP) RWY 33

TED STEVENS ANCHORAGE INTL (ANC) (PANC)

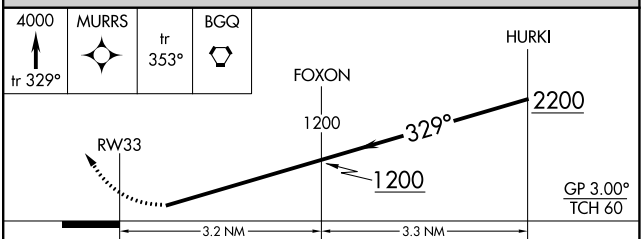
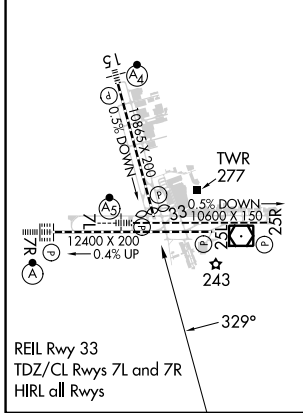
RNP AR APCH. RF required.
 For uncompensated Baro-VNAV systems, procedure NA below -17°C or above 54°C.
 -21°C

MISSED APPROACH: Climb to 4000 on the RNAV missed approach route to BGQ VORTAC and hold.

D-ATIS 135.5	ANCHORAGE APP CON 118.6 290.5	ANCHORAGE TOWER 118.3 257.8	GND CON 121.9 338.25	CLNC DEL 119.4 323.1
------------------------	-----------------------------------------	---------------------------------------	--------------------------------	--------------------------------



ELEV 151	D	TDZE 121
----------	----------	----------



CATEGORY	A	B	C	D
RNP 0.11 DA		463-1	342 (400-1)	
RNP 0.20 DA		525-1 1/8	404 (400-1 1/8)	
RNP 0.30 DA		687-1 5/8	566 (600-1 5/8)	

AUTHORIZATION REQUIRED

AK, 31 OCT 2024 to 26 DEC 2024

AK, 31 OCT 2024 to 26 DEC 2024