

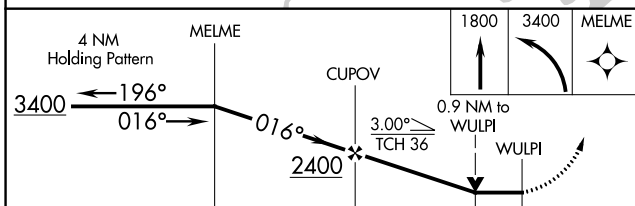
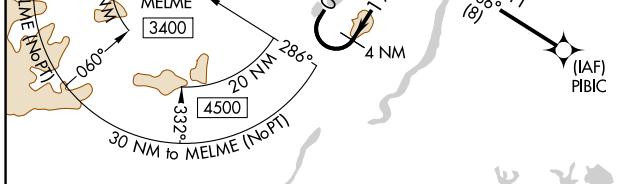
APP CRS	Rwy Idg	<b>5190</b>
<b>016°</b>	TDZE	<b>642</b>
	Apt Elev	<b>647</b>

# RNAV (GPS) RWY 2

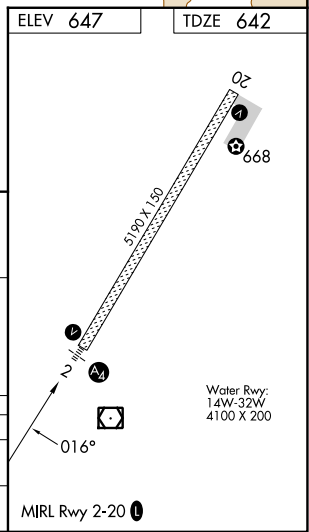
BETTLES(BTT)(PABT)

RNP APCH.	MALS	MISSED APPROACH: (Do not exceed 230K until MELME) Climb to 1800 then climbing left turn to 3400 direct MELME and hold.
<p>▼ Inoperative table does not apply. Circling NA east of Rwy 2-20.</p> <p>▲ For inop ALS, increase Cat C/D visibility to 1 3/4 SM. Rwy 2 helicopter visibility reduction below 3/4 SM NA.</p> <p>⚡ -44°C</p>		

ASOS <b>135.45</b>	ANCHORAGE CENTER <b>124.6 352.0</b>	FAIRBANKS RADIO <b>122.2</b>	CTAF <b>122.9</b>
-----------------------	--	---------------------------------	----------------------



CATEGORY	A	B	C	D
LNVA MDA	1100-1 458 (500-1)			
CIRCLING	1100-1 453 (500-1)	1320-2 673 (700-2)	1320-2 1/4 673 (700-2 1/4)	



AK, 31 OCT 2024 to 26 DEC 2024

AK, 31 OCT 2024 to 26 DEC 2024