

# RNAV (GPS) RWY 20

BETTLES(BTT)(PABT)

APP CRS	Rwy Idg	<b>5190</b>
<b>191°</b>	TDZE	<b>647</b>
	Apt Elev	<b>647</b>

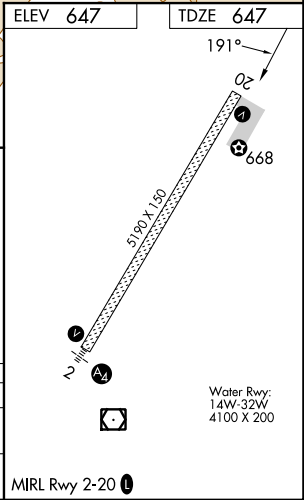
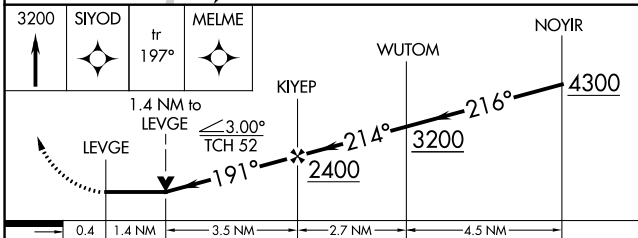
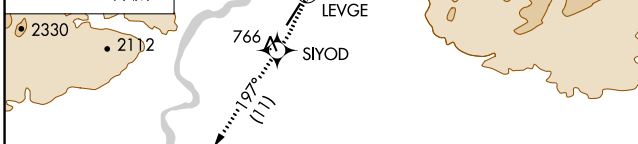
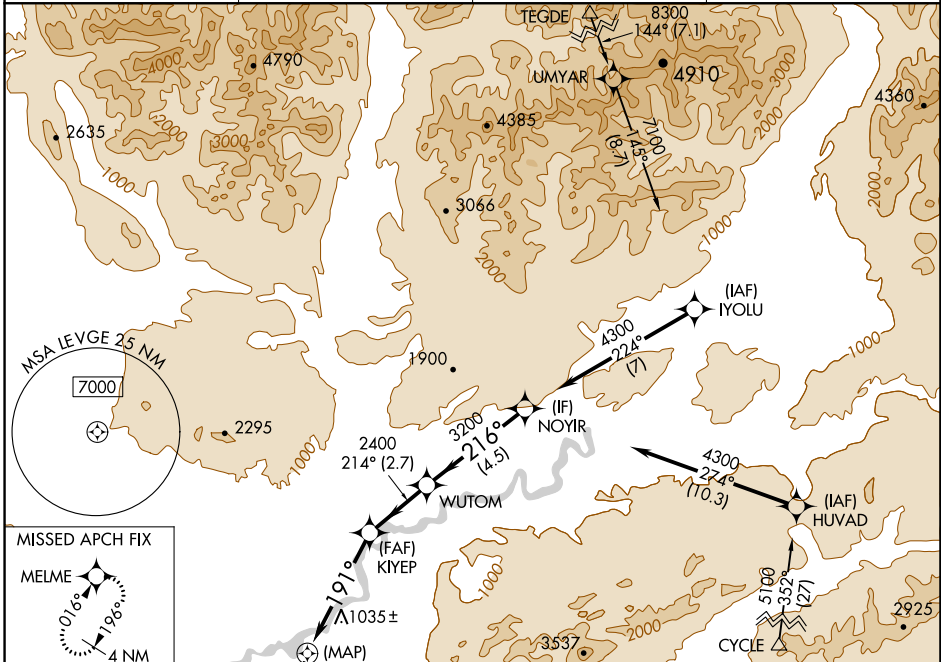
RNP APCH.

**⚠** Circling NA east of Rwy 2-20. Rwy 20 helicopter visibility reduction below 3/4 SM NA.

**❄** -44°C

MISSED APPROACH: Climb to 3200 direct SIYOD and on track 197° to MELME and hold.

ASOS	ANCHORAGE CENTER	FAIRBANKS RADIO	CTAF
<b>135.45</b>	<b>124.6 352.0</b>	<b>122.2</b>	<b>122.9 0</b>



CATEGORY	A	B	C	D
LNVA MDA	1300-1 653 (700-1)	1300-1 653 (700-1)	1300-1 653 (700-1)	1300-1 653 (700-1)
CIRCLING	1300-1 653 (700-1)	1320-2 673 (700-2)	1320-2 673 (700-2)	1320-2 673 (700-2)

MIRL Rwy 2-20 0

AK, 31 OCT 2024 to 26 DEC 2024

AK, 31 OCT 2024 to 26 DEC 2024