

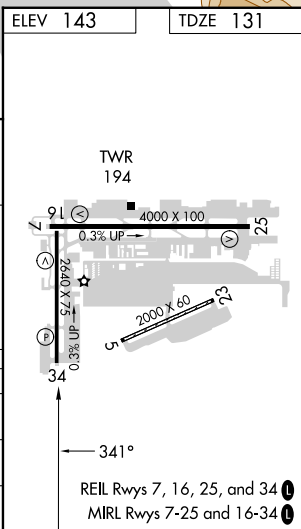
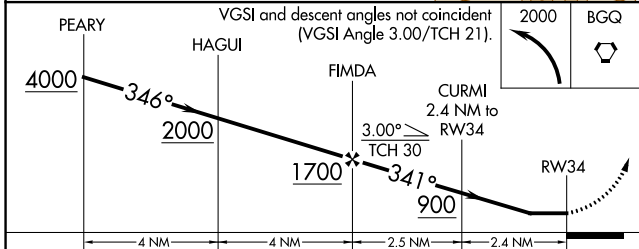
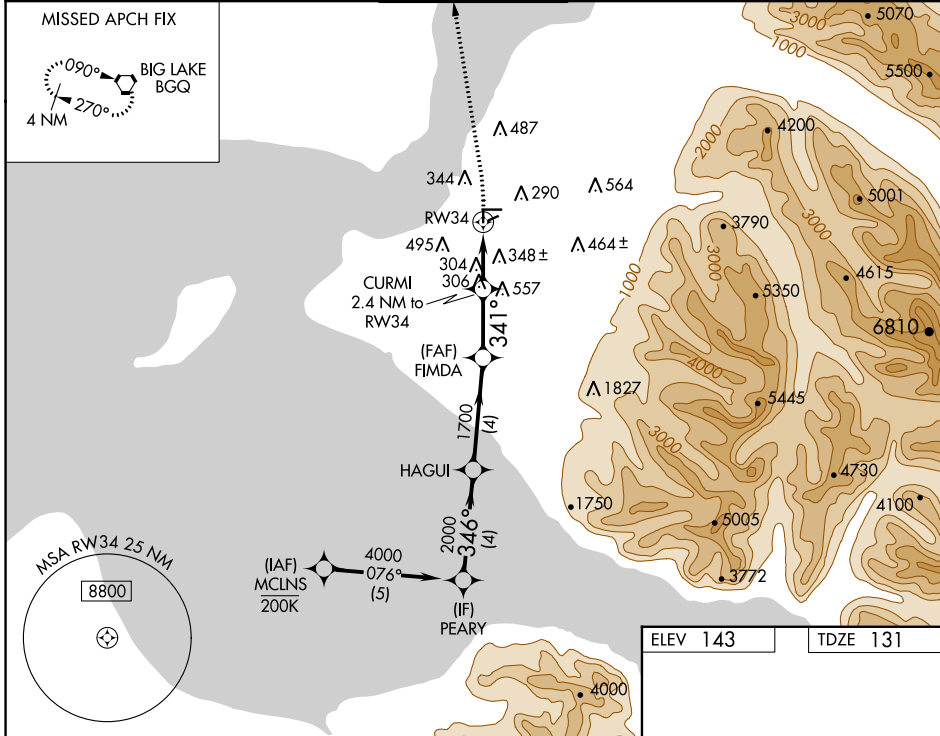
WAAS CH <b>47267</b> <b>W34A</b>	APP CRS <b>341°</b>	Rwy Idg <b>2640</b> TDZE <b>131</b> Apt Elev <b>143</b>
--	------------------------	---

# RNAV (GPS) RWY 34

MERRILL FLD (MRI) (PAMR)

RNP APCH - GPS.		MISSED APPROACH: Climbing left turn to 2000 direct BQG VORTAC and hold.		
RADAR required for procedure entry.				
<p><b>⚠</b> When local altimeter setting not received, use Ted Stevens Anchorage Intl altimeter setting and increase all MDAs 20 feet. Procedure NA at night.</p> <p><b>⚠</b> Helicopter visibility reduction below 1 SM NA.</p>				

ATIS <b>124.25</b>	ANCHORAGE APP CON <b>119.1 363.2</b>	MERRILL TOWER * <b>126.0 (CTAF) 0</b>	GND CON <b>121.7</b>	UNICOM <b>122.95</b>
-----------------------	---	--	-------------------------	-------------------------



CATEGORY	A	B	C	D
LP MDA	560-1	429 (500-1)		NA
LNAV MDA	600-1	469 (500-1)		NA
CIRCLING	740-1 597 (600-1)	800-1 657 (700-1)		NA

AK, 31 OCT 2024 to 26 DEC 2024

AK, 31 OCT 2024 to 26 DEC 2024