

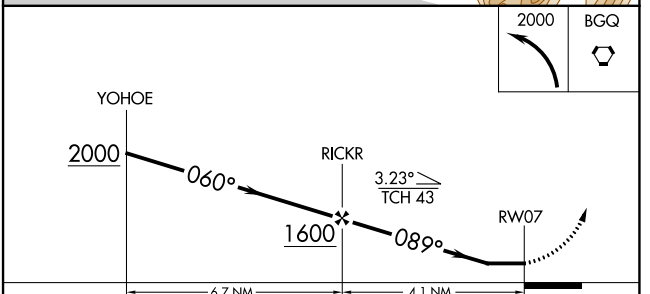
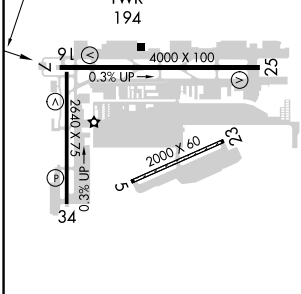
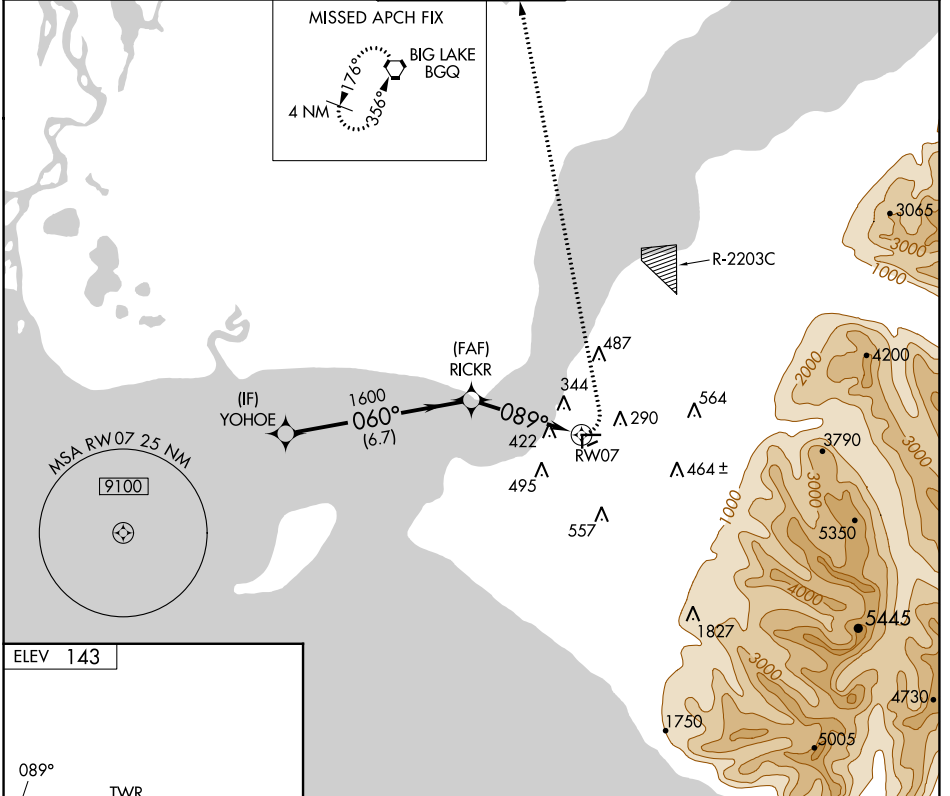
APP CRS 089°	Rwy Idg TDZE Apt Elev	N/A N/A 143
------------------------	-----------------------------	--

RNAV (GPS)-A

MERRILL FLD (MRI) (PAMR)

RNP APCH - GPS.			MISSED APPROACH: Climbing left turn to 2000 direct BGG VORTAC and hold.	
-----------------	--	--	---	--

ATIS 124.25	ANCHORAGE APP CON 119.1 363.2	MERRILL TOWER * 126.0 (CTAF) 0	GND CON 121.7	UNICOM 122.95
-----------------------	---	--	-------------------------	-------------------------



REIL Rwy 7, 16, 25, and 34 0	MIRL Rwy 7-25 and 16-34 0			
CATEGORY	A	B	C	D
CIRCLING	740-1 597 (600-1)	800-1 657 (700-1)	920-2¼ 777 (800-2¼)	NA

AK, 31 OCT 2024 to 26 DEC 2024

AK, 31 OCT 2024 to 26 DEC 2024