

DELTA SEVEN DEPARTURE

AL-1729 [USAF]

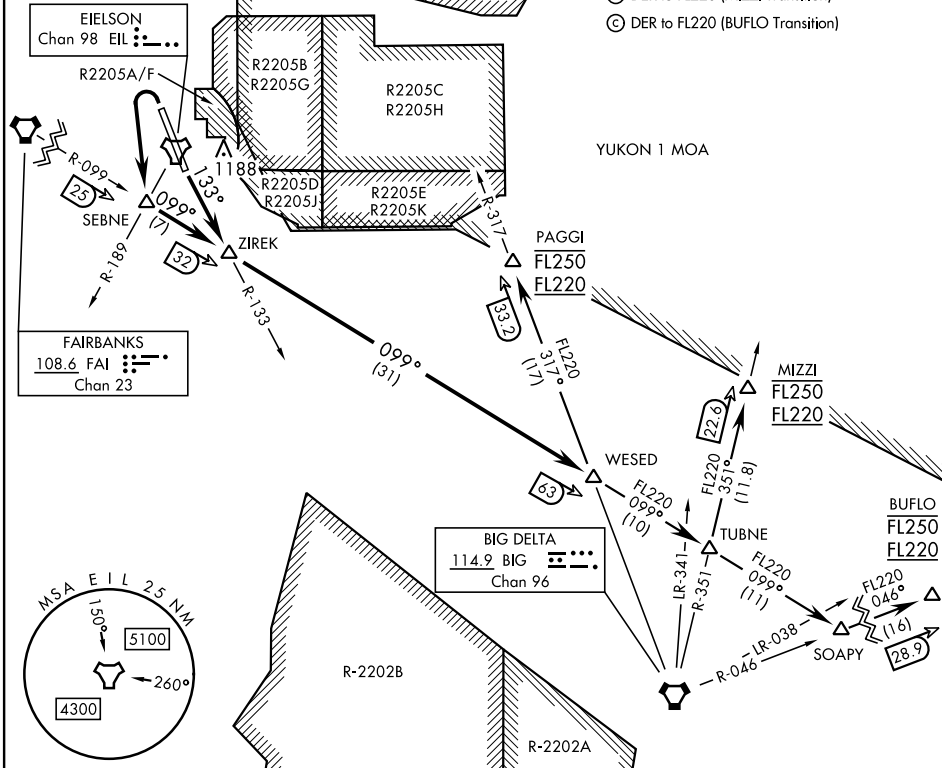
EIELSON AFB (PAEI)

FAIRBANKS, ALASKA

ATIS ★ 119.9 273.5	RADAR required	YUKON 2 MOA	Rwy	Knots	60	120	180	240	300	360
CLINC DEL 343.7			4/32 ⓐ	V/V(fpm)	444	888	1332	1776	2220	2664
GND CON 121.8 275.8			4/32 ⓑ	V/V(fpm)	410	820	1230	1640	2050	2460
TOWER ★ 127.2 352.05			4/32 ⓒ	V/V(fpm)	303	606	909	1212	1515	1818
FAIRBANKS DEP CON 127.1 251.1										

ATC Climb Rate

- ⓐ DER to FL220 (PAGGI Transition) 4698 •
- ⓑ DER to FL220 (MIZZI Transition)
- ⓒ DER to FL220 (BUFLO Transition)



DEPARTURE ROUTE DESCRIPTION

- TAKEOFF RWY 14 (DELTA7 • ZIREK):** Intercept EIL TACAN R-133 to join FAI VORTAC R-099 at ZIREK and track outbound. Thence...
- TAKEOFF RWY 32 (DELTA7 • ZIREK):** Turn left to intercept FAI VORTAC R-099 at SEBNE. Proceed outbound direct ZIREK. Thence...
- BUFLO GATE TRANSITION (DELTA7 • BUFLO):** ...turn left at SOAPY and track outbound on BIG VORTAC R-046 to BUFLO. Cross BUFLO at FL220 block FL250.
- MIZZI GATE TRANSITION (DELTA7 • MIZZI):** ...turn left at TUBNE and track outbound on BIG VORTAC R-351 to MIZZI. Cross MIZZI at FL220 block FL250.
- PAGGI GATE TRANSITION (DELTA7 • PAGGI):** ...turn left at WESED and track outbound on BIG VORTAC R-317 to PAGGI. Cross PAGGI at FL220 block FL250.

DELTA SEVEN DEPARTURE

Orig 20APR23

FAIRBANKS, ALASKA
EIELSON AFB (PAEI)

AK, 31 OCT 2024 to 26 DEC 2024

AK, 31 OCT 2024 to 26 DEC 2024