

# HAWGG EIGHT DEPARTURE (HAWGG8•HAWGG)

EIELSON AFB (PAEI)

FAIRBANKS, ALASKA

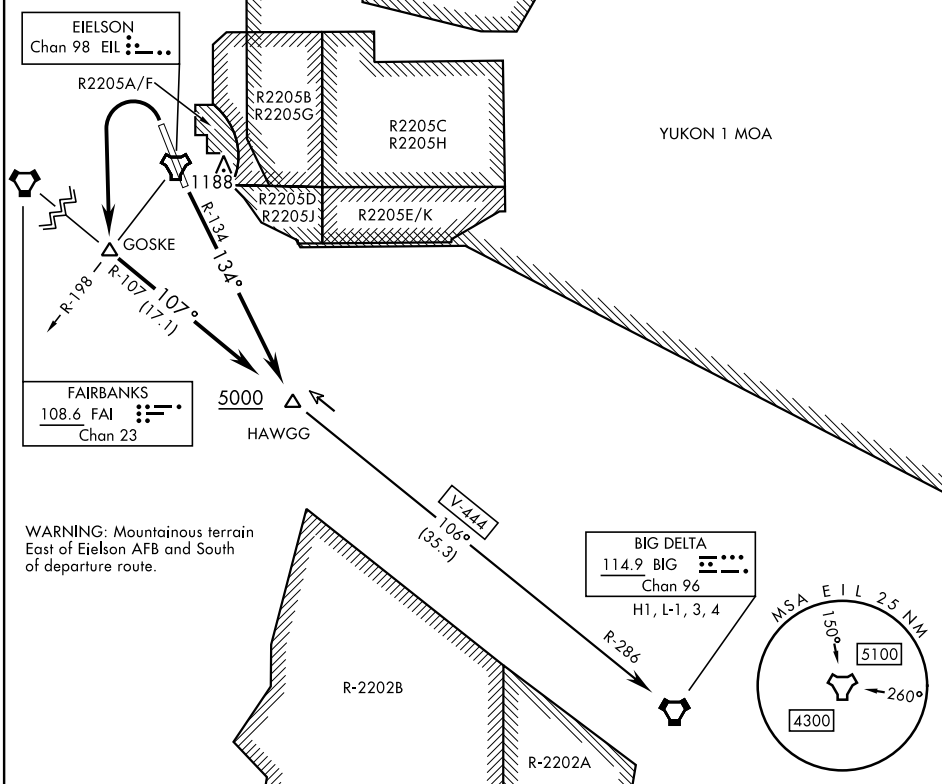
ATIS ★ 119.9 273.5	AL-1729 [USAF]	YUKON 2 MOA	Rwy	Knots	60	120	180	240	300	360
CLNC DEL 343.7			32	V/V(fpm)	214	428	642	856	1070	1284
GND CON 121.8 275.8			14	V/V(fpm)	241	482	723	964	1205	1446

TOWER ★ 127.2 352.05  
 FAIRBANKS DEP CON 127.1 251.1

ATC Climb Rate to 5000

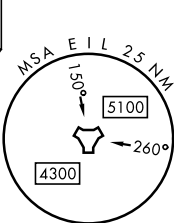
**RADAR required**

4698 •



WARNING: Mountainous terrain East of Eielson AFB and South of departure route.

**BIG DELTA**  
 114.9 BIG  
 Chan 96  
 H1, L-1, 3, 4



## DEPARTURE ROUTE DESCRIPTION

**TAKEOFF RWY 14:** Turn left to join EIL TACAN R-134 to FAI VORTAC R-107. Cross HAWGG at or above 5000. Thence...

**TAKEOFF RWY 32:** Turn left to GOSKE then continue outbound FAI VORTAC R-107 to HAWGG. Cross HAWGG at or above 5000. Thence...

...intercept V-444 to BIG VORTAC, then via assigned route.

# HAWGG EIGHT DEPARTURE (HAWGG8•HAWGG)

Orig 20APR23

FAIRBANKS, ALASKA

EIELSON AFB (PAEI)

AK, 31 OCT 2024 to 26 DEC 2024

AK, 31 OCT 2024 to 26 DEC 2024