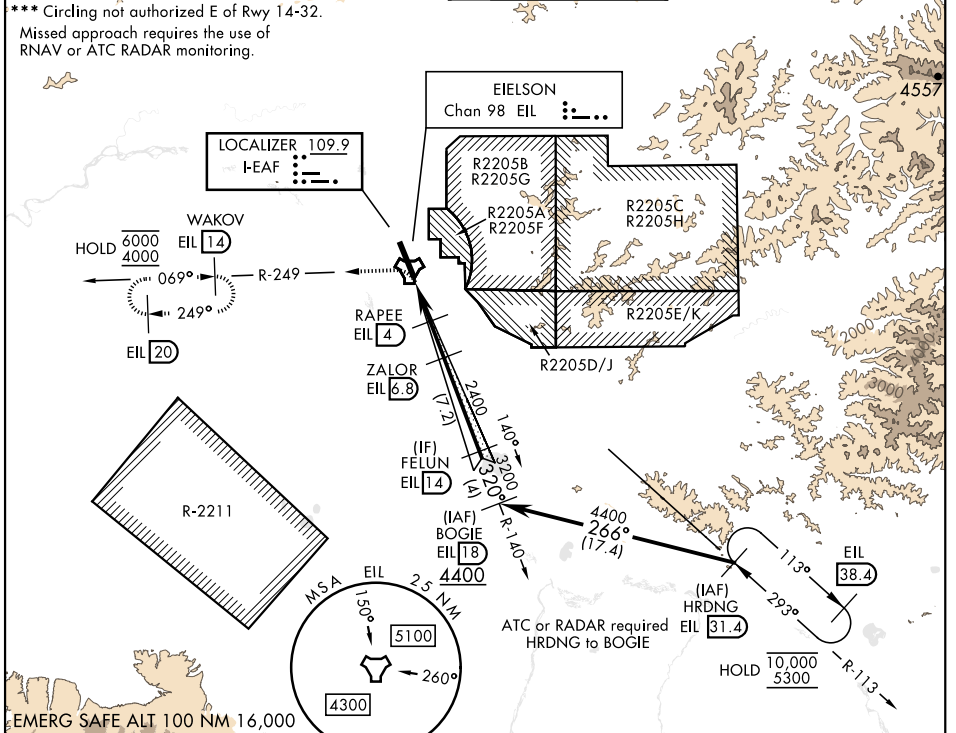


# ILS Y or LOC/DME Y RWY 32

LOC I-FAF <b>109.9</b>	APCH CRS <b>320°</b>	Rwy Igd 14,530 TDZE 548 Arprt Elev 548	AL-1729 [USAF]	EIELSON AFB (PAEI)
---------------------------	-------------------------	---	----------------	--------------------

<p>▼ * When ALS inop, increase RVR to 40 and vis to ¼ mile.                  ** When ALS inop, increase CAT AB RVR to 55, vis to 1 mile; CAT CDE RVR to 60, vis to 1½ mile.</p>		<p>ALSIF-1 A1</p>	<p>MISSED APPROACH: Climbing left turn on EIL R-249 to 4000 to WAKOV and hold. Continue climb-in-hold.</p>	
<p>ATIS ★ <b>119.9 273.5</b></p>	<p>FAIRBANKS APP CON <b>127.1 251.1 360° - 179°</b> <b>125.35 363.2 180° - 359°</b></p>	<p>TOWER ★ <b>127.2 352.05</b></p>	<p>GND CON <b>121.8 275.8</b></p>	<p>CLNC DEL <b>343.7</b></p>



ELEV 548	TDZE 548	<p>VGSI and ILS glidepath not coincident (VGSI angle 2.70/TCH 44).</p>		<p>4000 EIL R-249</p>	<p>WAKOV R-249 14</p>
<p>HIRL Rwy 14-32</p>					
<p>Rwy Igt on N 11,314' of rwy 300' wide, rwy Igt on S 3200' of rwy 150' wide.</p>					
<p>TACAN PELDE EIL 1.7</p>					
<p>RAPEE EIL 4</p>					
<p>ZALOR EIL 6.8</p>					
<p>FELUN EIL 14</p>					
<p>3200</p>					
<p>GS 2.70° TCH 50</p>					
<p>0.5 NM    3 NM    2.8 NM</p>					
CATEGORY	A	B	C	D	E
S-ILS 32*	748/24		200	(200-½)	
S-LOC 32**	960/24	412 (500-½)	960/40	412	500-¾)
CIRCLING***	1000-1 452 (500-1)	1040-1 492 (500-1)	1040-1½ 492 (500-1½)	1280-2¼ 732 (800-2¼)	1280-2½ 732 (800-2½)

# ILS Y or LOC/DME Y RWY 32

AK, 31 OCT 2024 to 26 DEC 2024

AK, 31 OCT 2024 to 26 DEC 2024