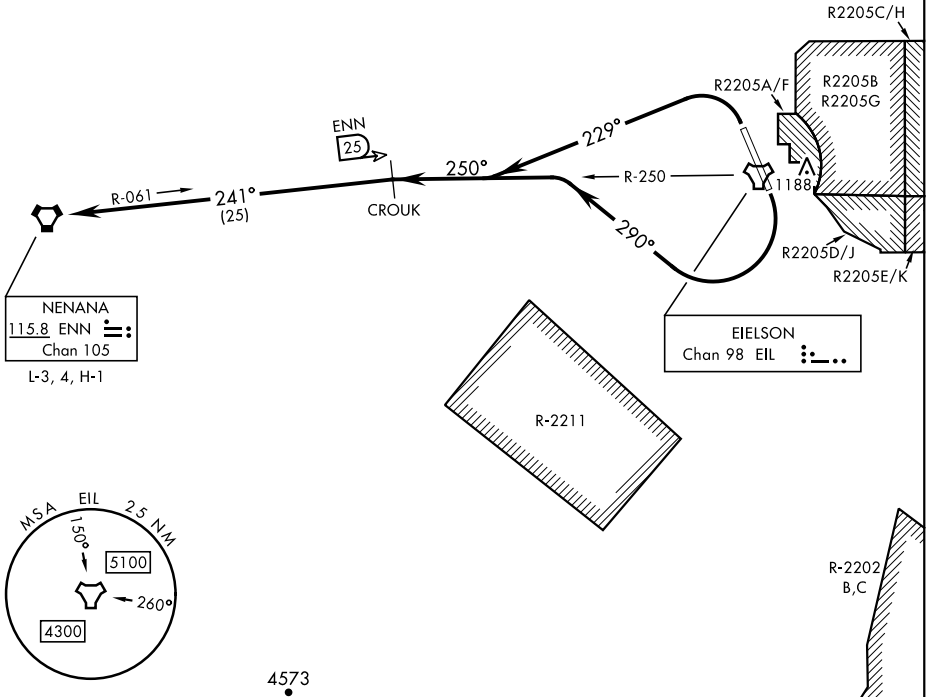


NENANA SIX DEPARTURE (NENNA6•ENN)

ATIS ★ 119.9 273.5
 CLNC DEL 343.7
 GND CON 121.8 275.8
 TOWER ★ 127.2 352.05
 FAIRBANKS DEP CON 127.1 251.1

AL-1729 [USAF]

CAUTION: Mountainous terrain
 East of Eielson AFB and South
 of departure route.



AK, 31 OCT 2024 to 26 DEC 2024

AK, 31 OCT 2024 to 26 DEC 2024

DEPARTURE ROUTE DESCRIPTION

TAKEOFF RWY 14: Turn right heading 290° to intercept EIL TACAN R-250 outbound to CROUK and climb to assigned altitude, thence...

TAKEOFF RWY 32: Turn left heading 229° to intercept EIL TACAN R-250 outbound to CROUK and climb to assigned altitude, thence...

...intercept ENN VORTAC R-061 inbound to NENANA then via assigned route.

NENANA SIX DEPARTURE (NENNA6•ENN)