

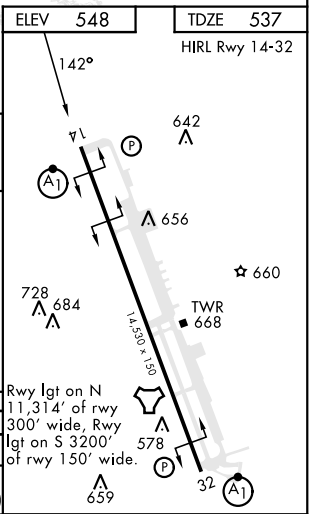
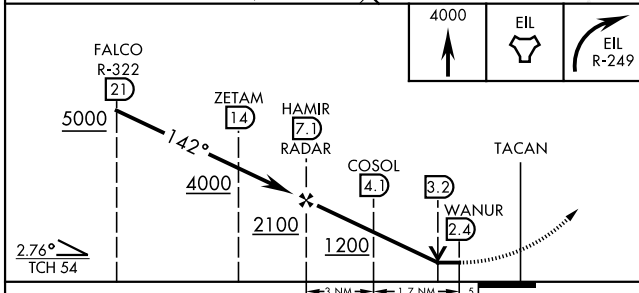
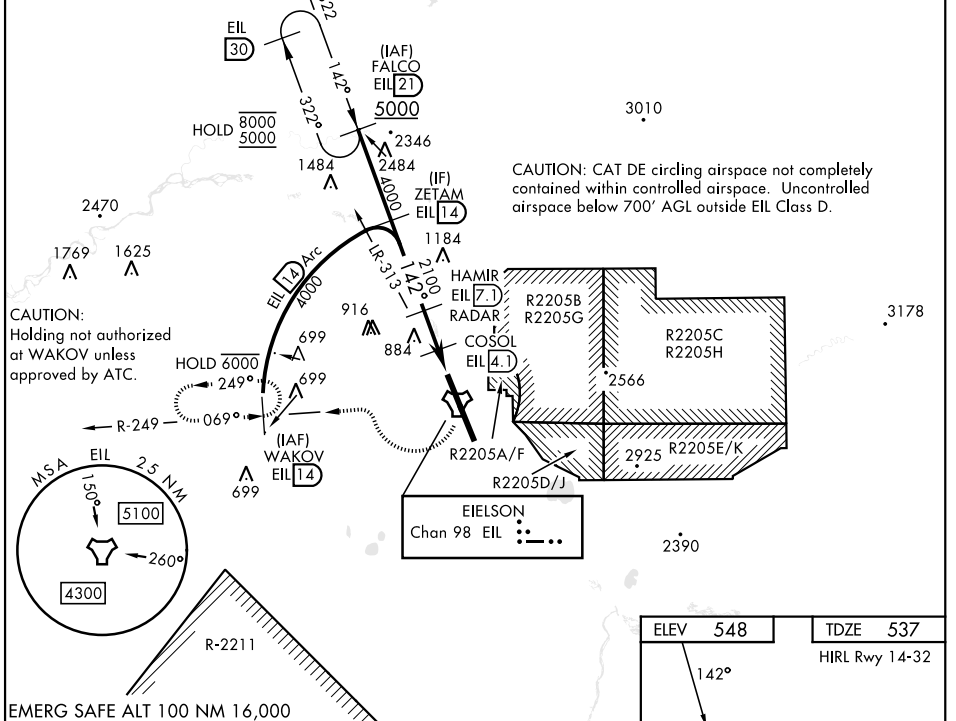
# TACAN RWY 14

TACAN EIL Chan 98	APCH CRS 142°	Rwy ldg 14,530 TDZE 537 Arpt Elev 548	AL-1729 [USAF]	EIELSON AFB (PAEI)
----------------------	------------------	---	----------------	--------------------

RADAR or DME required.	ALSF-1	MISSED APPROACH: Climb to 4000 direct EIL TACAN, continue climbing right turn to intercept EIL TACAN R-249 to WAKOV and hold. Continue climb-in hold to 4000.
------------------------	--------	---

ATIS ★ 119.9 273.5	ASOS 118.525	FAIRBANKS APP CON 127.1 251.1 (360° - 179°) 125.35 363.2 (180° - 359°)	TOWER ★ 127.2 352.05	GND CON 121.8 275.8	CLNC DEL 343.7
-----------------------	-----------------	--	-------------------------	------------------------	-------------------

\*\*Circling not authorized E of Rwy 14-32. Missed Approach requires use of RNAV or ATC RADAR monitoring. 389.4



CATEGORY	A	B	C	D	E
S-14 *	960/24 423 (500-½)		960/40 423 (500-¾)		
CIRCLING **	1000-1 452 (500-1)	1040-1 492 (500-1)	1040-1½ 492 (500-1½)	1280-2¼ 732 (800-2¼)	1280-2½ 732 (800-2½)

FAIRBANKS, ALASKA 64°40'N-147°06'W EIELSON AFB (PAEI)

# TACAN RWY 14

AK, 31 OCT 2024 to 26 DEC 2024

AK, 31 OCT 2024 to 26 DEC 2024