

TACAN Z RWY 32

TACAN EIL Chan 98	APCH CRS 320°	Rwy ldg 14,530 TDZE 548 Arpt Elev 548
-----------------------------	-------------------------	------------------------------------------------------------------

AL-1729 [USAF]

EIELSON AFB (PAEI)

DME or RADAR required. RADAR required b/n FALCO-WAKOV.

ALSF-1

MISSED APPROACH: Climbing left turn on EIL R-249 to 4000 to WAKOV and hold. Continue climb in hold.

▼ *When ALS inop, increase CAT AB RVR to 55, vis to 1 mile; CAT CDE vis to 1 1/8 mile.

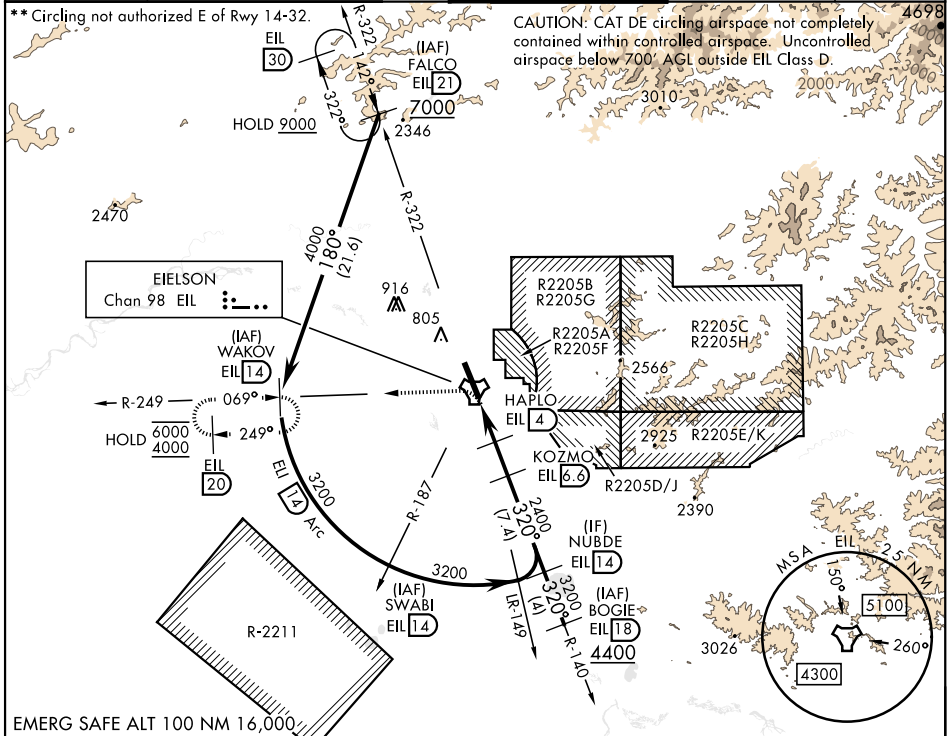


ATIS ★ 119.9 273.5	FAIRBANKS APP CON 127.1 251.1 360° - 179° 125.35 363.2 180° - 359°
------------------------------	----------------------------------------------------------------------------------------

TOWER ★ 127.2 352.05

GND CON 121.8 275.8

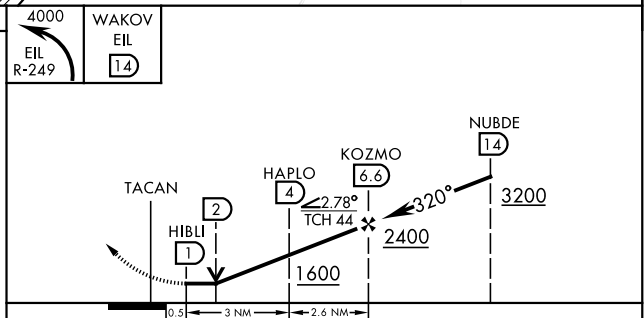
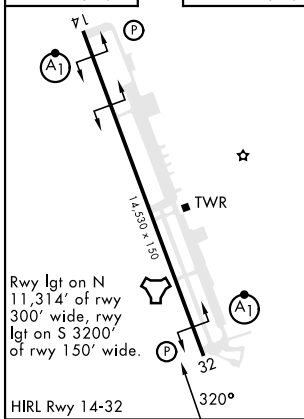
CLNC DEL 343.7



AK, 31 OCT 2024 to 26 DEC 2024

AK, 31 OCT 2024 to 26 DEC 2024

EMERG SAFE ALT 100 NM 16,000



CATEGORY	A	B	C	D	E
S-32 *	1040/24 492 (500-1/2)		1040/50 492 (500-1)		
**	1040-1 492 (500-1)		1040-1 1/2 492 (500-1 1/2)	1280-2 1/4 732 (800-2 1/4)	1280-2 1/2 732 (800-2 1/2)
☑ CIRCLING					

TACAN Z RWY 32