

# WAPAX FOUR DEPARTURE (WAPAX4•WAPAX)

A-1:1729 [USAF]

EIELSON AFB (PAE)  
FAIRBANKS, ALASKA

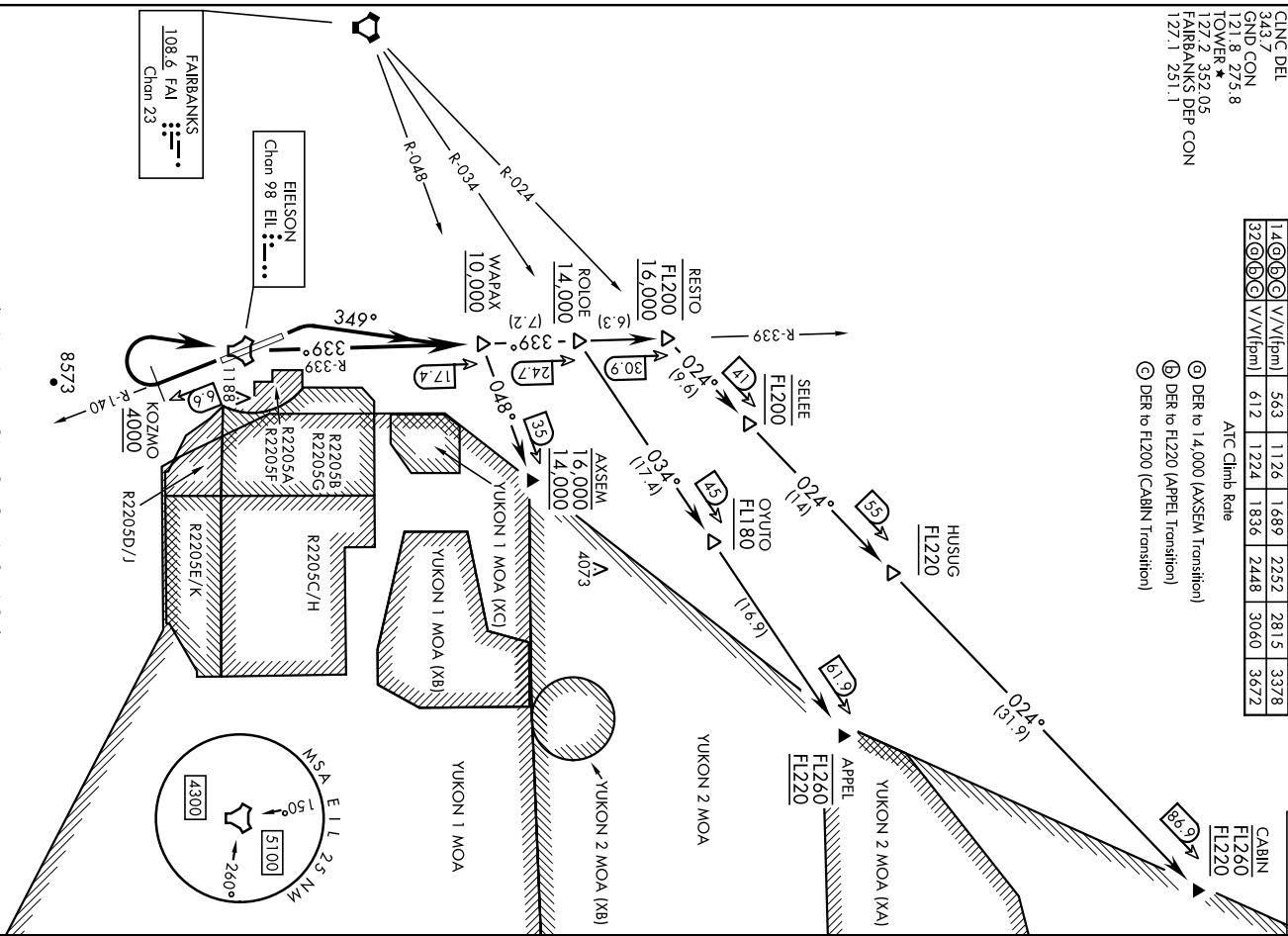
Rwy	Knots	60	120	180	240	300	360
14⑥③②	V/Vifpm)	563	1126	1689	2252	2815	3378
32③②③②	V/Vifpm)	612	1224	1836	2448	3060	3672

ATC Climb Rate

ATIS \* 119.9 273.5  
 CINCL DEL 343.7  
 GND CON 121.8 275.8  
 TOWER \* 127.2 352.05  
 FAIRBANKS DEP CON 127.1 251.1

- ⊙ DER to 14,000 (AXSEM Transition)
- Ⓛ DER to FL220 (APPEL Transition)
- Ⓜ DER to FL200 (CABIN Transition)

CABIN  
FL260  
FL220



(NARRATIVE ON FOLLOWING PAGE)

# WAPAX FOUR DEPARTURE (WAPAX4•WAPAX)

Orig 20APR23

FAIRBANKS, ALASKA  
EIELSON AFB (PAE)

**WAPAX FOUR DEPARTURE (WAPAX4 • WAPAX)**EIELSON AFB (PAEI)  
FAIRBANKS, ALASKA

AL-1729 [USAF]

## DEPARTURE ROUTE DESCRIPTION

TAKEOFF RWY 14: Turn right to intercept EIL TACAN R-140 to KOZMO. Cross KOZMO at or above 4000, then turn right direct EIL to intercept EIL R-339 outbound to WAPAX. Cross WAPAX at or above 10,000. Thence . . .

TAKEOFF RWY 32: Turn right heading 349° to intercept EIL TACAN R-339 to WAPAX. Cross WAPAX at or above 10,000. Thence . . .

APPEL GATE TRANSITION (WAPAX4 • APPEL): Cross ROLOE at or above 14,000. Turn right track outbound on FAI VORTAC R-034 direct OYUTO, direct APPEL. Cross OYUTO at or above FL180, cross APPEL at or above FL220 block FL260.

AXSEM GATE TRANSITION (WAPAX4 • AXSEM): Turn right and track outbound on FAI VORTAC R-048 to AXSEM. Cross AXSEM at or above 14,000 block 16,000.

CABIN GATE TRANSITION (WAPAX4 • CABIN): Cross RESTO at or above 16,000 block FL200. Turn right and track outbound on FAI VORTAC R-024 direct SELEE, direct HUSUG, direct CABIN. Cross SELEE at FL200, cross HUSUG at or above FL220, cross CABIN at or above FL220 block FL260.

**WAPAX FOUR DEPARTURE (WAPAX4 • WAPAX)**

Orig 20APR23

FAIRBANKS, ALASKA  
EIELSON AFB (PAEI)