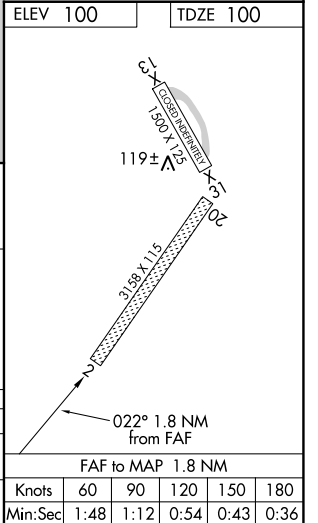
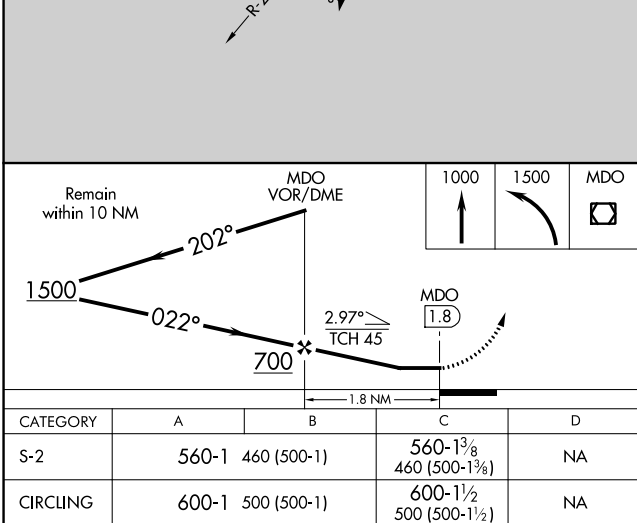
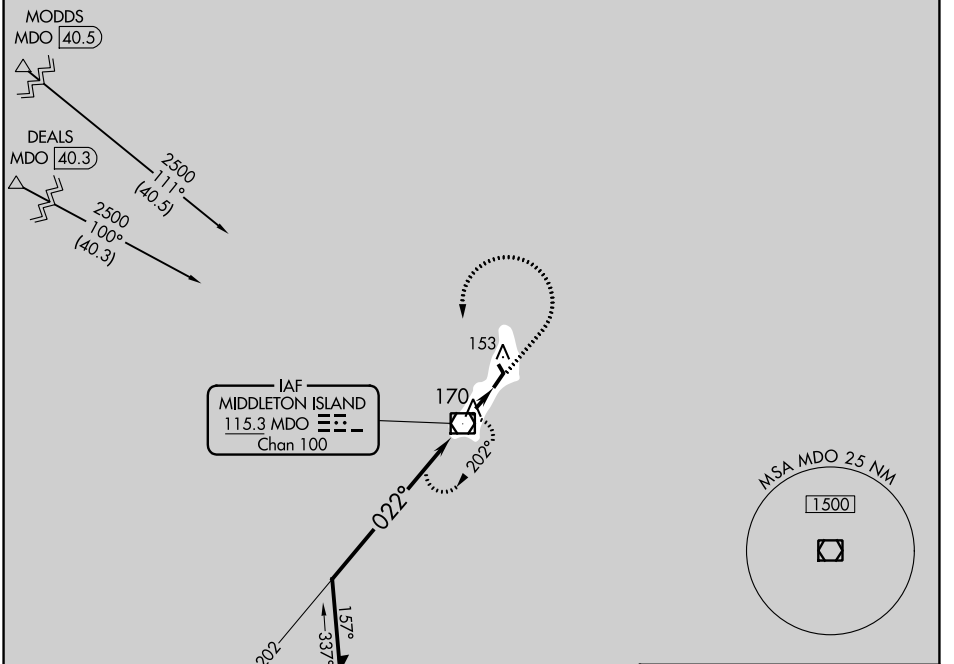


VOR/DME MDO	APP CRS	Rwy Idg	3158
115.3	022°	TDZE	100
Chan 100		Apt Elev	100

VOR RWY 2
MIDDLETON ISLAND (MDO) (PAMD)

<p>▼ When local altimeter setting not received, procedure NA. Procedure NA at night. Helicopter visibility reduction below 1 SM NA.</p>		<p>MISSED APPROACH: Climb to 1000 then climbing left turn to 1500 direct MDO VOR/DME and hold.</p>	
AWOS-3P	ANCHORAGE CENTER	JUNEAU RADIO	CTAF
135.725	133.6 269.4	122.05	122.9



AK, 31 OCT 2024 to 26 DEC 2024

AK, 31 OCT 2024 to 26 DEC 2024