

WAAS CH <b>57941</b> <b>W09A</b>	APP CRS <b>091°</b>	Rwy Idg TDZE Apt Elev	<b>5900</b> <b>13</b> <b>15</b>
--	------------------------	-----------------------------	---------------------------------------

# RNAV (GPS) RWY 9

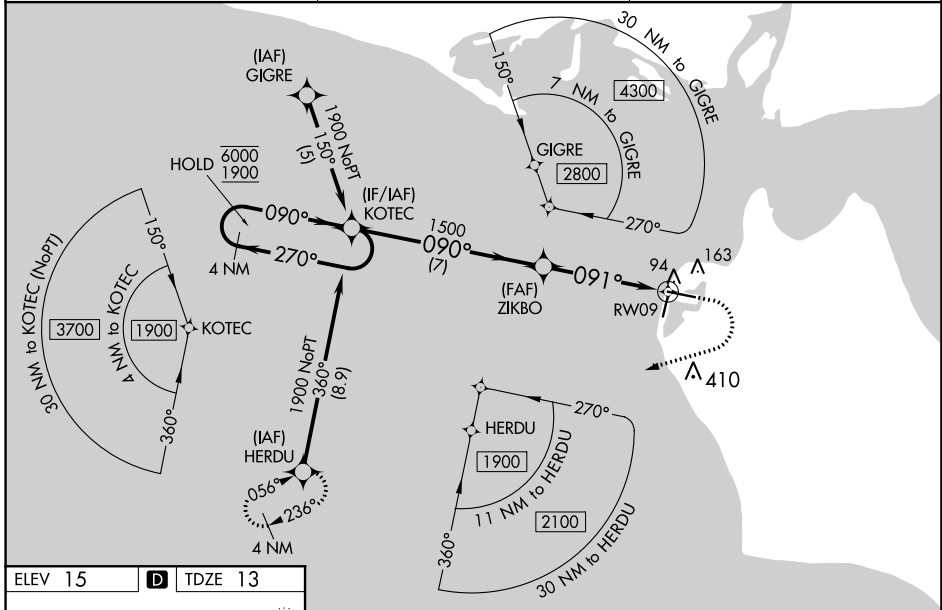
RALPH WIEN MEML (OTZ) (PAOT)

RNP APCH.

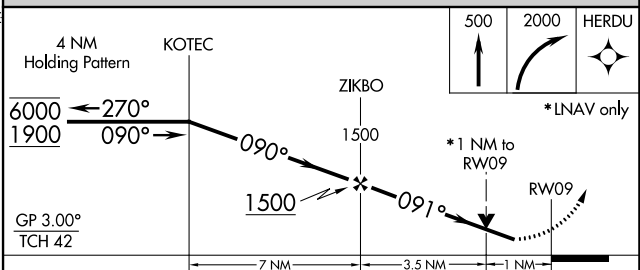
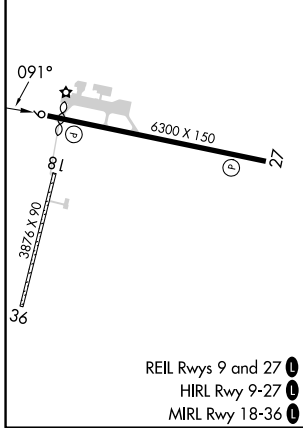
**⚠** Circling Rwy 18, 36 NA at night, Circling Rwy 27 at night, operational VGSi required, remain on or above VGSi glidepath until threshold.  
Rwy 9 helicopter visibility reduction below RVR 4000 NA. For uncompensated Baro-VNAV systems, LNAV/VNAV NA below -20°C or above 54°C.

MISSED APPROACH: Climb to 500 then climbing right turn to 2000 direct HERDU and hold.

AFIS <b>135.45</b>	ANCHORAGE CENTER <b>119.2 263.0</b>	KOTZEBUE RADIO <b>123.6 (CTAF) 0</b>
-----------------------	--	---



ELEV 15	<b>D</b>	TDZE 13
---------	----------	---------



CATEGORY	A	B	C	D
LPV DA		263/50	250 (300-1)	
LNAV/VNAV DA		263/50	250 (300-1)	
LNAV MDA		360/55	347 (400-1)	
<b>C</b> CIRCLING	520-1	505 (600-1)	720-2 705 (800-2)	720-2¼ 705 (800-2¼)

AK, 31 OCT 2024 to 26 DEC 2024

AK, 31 OCT 2024 to 26 DEC 2024