

LOC I-PAU 109.9	APP CRS 360°	Rwy ldg TDZE Apt Elev	6500 47 66
---------------------------	------------------------	-----------------------------	---------------------------------------

ILS or LOC RWY 36

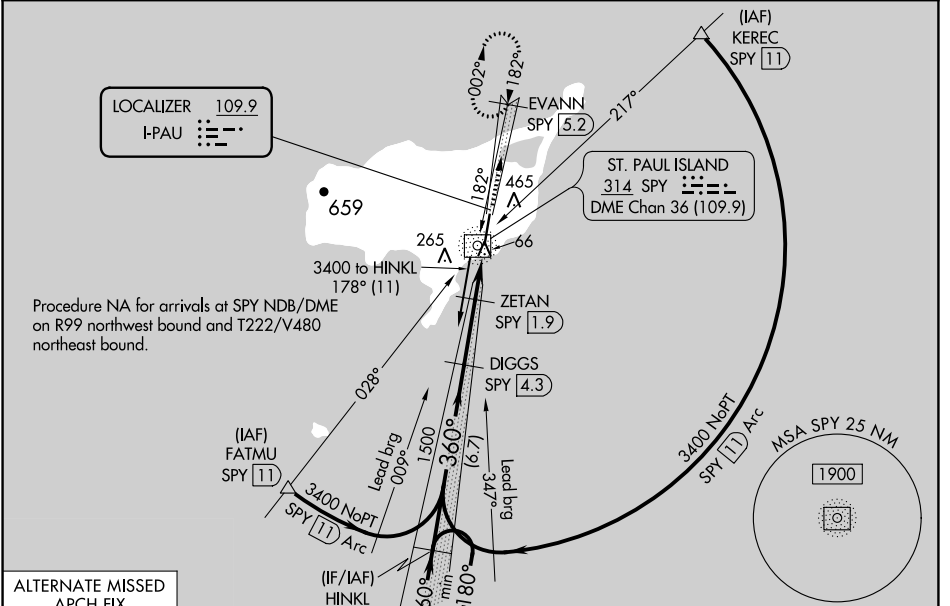
ST PAUL ISLAND (SNP)(PASN)

ADF and DME required for procedure entry. DME required.

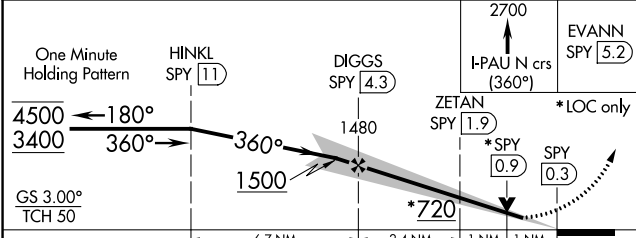
⚠ Circling NA west of Rwy 18-36. Inop table does not apply to S-ILS.
⚠ When local altimeter setting not received, procedure NA. DME from SPY NDB/DME. Simultaneous reception of I-PAU and SPY DME required.

MALSF MISSED APPROACH: Climb to 2700 on I-PAU north course (360°) to EVANN/SPY 5.2 DME and hold, continue climb-in-hold to 2700.

ASOS 135.75	ANCHORAGE CENTER 119.1 339.8	CTAF 122.3
-----------------------	----------------------------------------	----------------------



ELEV 66	TDZE 47
HIRL Rwy 18-36	



CATEGORY	A	B	C	D
S-ILS 36		247- ³ / ₄	200 (200- ³ / ₄)	
S-LOC 36		380- ³ / ₄	333 (400- ³ / ₄)	
C CIRCLING	800-1 734 (800-1)		800-2 734 (800-2)	800-2 1/4 734 (800-2 1/4)

