

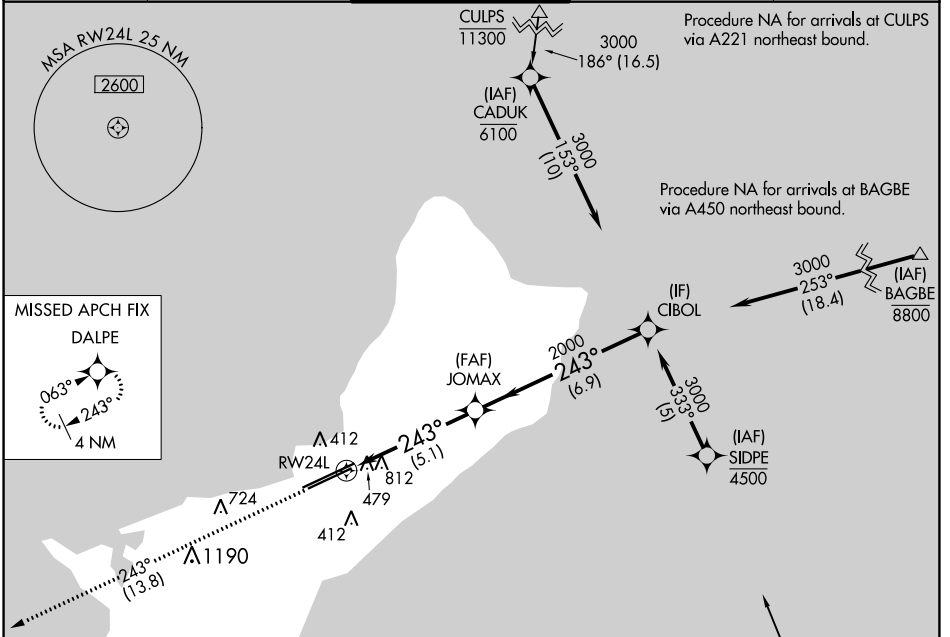
APP CRS <b>243°</b>	Rwy Idg <b>8710</b>
	TDZE <b>293</b>
	Apt Elev <b>305</b>

# RNAV (RNP) Z RWY 24L

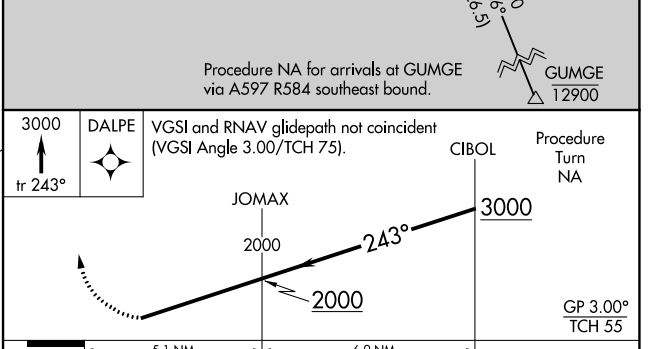
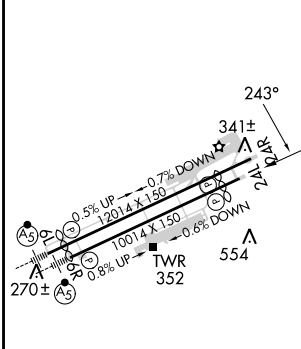
GUAM INTL (GUM)(PGUM)

RNP AR APCH - GPS.	MISSED APPROACH: Climb to 3000 via track 243° to DALPE and hold.
<p>For uncompensated Baro-VNAV systems, procedure NA below 19°C or above 48°C.</p>	

ATIS <b>119.0</b>	GUAM CERAP <b>119.8 269.0</b>	AGANA TOWER <b>118.1 340.2</b>	GND CON <b>121.9 336.4</b>	CLNC DEL <b>121.9</b>
----------------------	----------------------------------	-----------------------------------	-------------------------------	--------------------------



ELEV 305	<b>D</b>	TDZE 293
----------	----------	----------



CATEGORY	A	B	C	D
RNP 0.20 DA		1103-2½	810 (900-2½)	
RNP 0.30 DA		1140-2½	847 (900-2½)	

**AUTHORIZATION REQUIRED**

PAC, 31 OCT 2024 to 26 DEC 2024

PAC, 31 OCT 2024 to 26 DEC 2024