

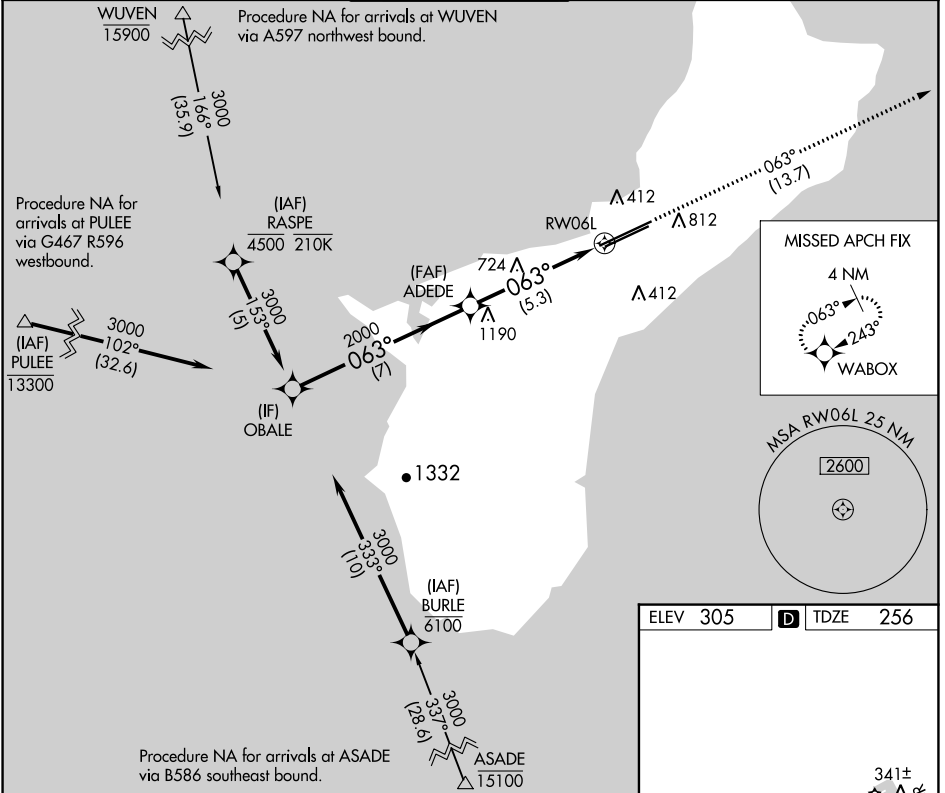
APP CRS	Rwy Idg	<b>11014</b>
<b>063°</b>	TDZE	<b>256</b>
	Apt Elev	<b>305</b>

# RNAV (RNP) Z RWY 6L

GUAM INTL (GUM)(PGUM)

RNP AR APCH - GPS.		MALSR 	MISSED APPROACH: Climb to 3000 via track 063° to WABOX and hold.
▽ For uncompensated Baro-VNAV systems, procedure NA below 19°C or above 48°C. For inop ALS, increase RNP *0.30 all Cats visibility to ¾ SM and RNP 0.30 all Cats visibility to 1½ SM. *Missed approach requires a minimum climb of 276 feet per NM to 1400.			

ATIS	GUAM CERAP	AGANA TOWER	GND CON	CLNC DEL
<b>119.0</b>	<b>119.8 269.0</b>	<b>118.1 340.2</b>	<b>121.9 336.4</b>	<b>121.9</b>

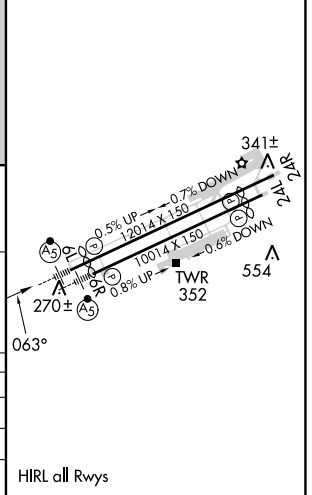


PAC, 31 OCT 2024 to 26 DEC 2024

PAC, 31 OCT 2024 to 26 DEC 2024

ELEV 305	<b>D</b> TDZE 256
----------	-------------------

Procedure Turn NA	OBALE	VGSI and RNAV glidepath not coincident (VGSI Angle 3.00/TCH 73)	3000	WABOX
	3000		↑ tr 063°	
GP 3.00° TCH 50		ADEDE	2000	
			2000	
	7 NM		5.3 NM	
CATEGORY	A	B	C	D
RNP 0.30* DA		514-½	258 (300-½)	
RNP 0.30 DA		656-⅝	400 (400-⅝)	



**AUTHORIZATION REQUIRED**

HIRL all Rwys