

# RNAV (GPS) Y RWY 24R

GUAM INTL (GUM)(PGUM)

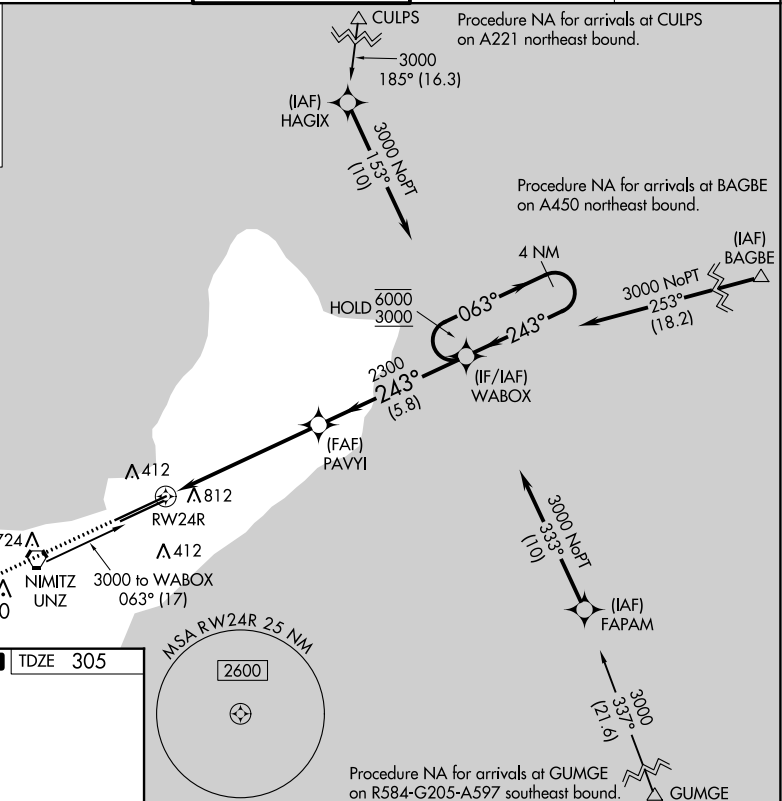
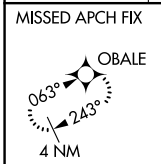
APP CRS <b>243°</b>	Rwy Idg <b>12014</b>
	TDZE <b>305</b>
	Apt Elev <b>305</b>

RNP APCH - GPS.

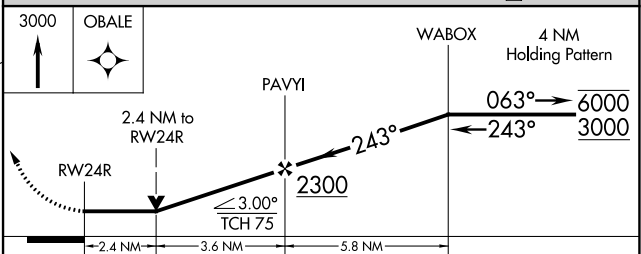
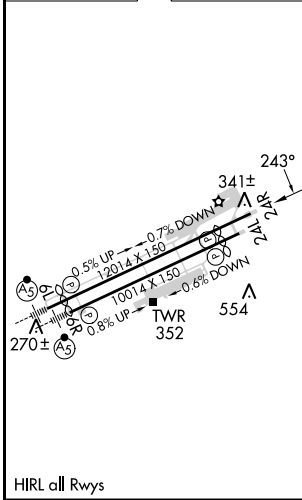
**▼** Circling NA southeast of Rwy 6R-24L.  
**▲** Rwy 24R helicopter visibility reduction below 3/4 SM NA.

MISSED APPROACH: Climb to 3000 direct OBALE and hold.

ATIS <b>119.0</b>	GUAM CERAP <b>119.8 269.0</b>	AGANA TOWER <b>118.1 340.2</b>	GND CON <b>121.9 336.4</b>	CLNC DEL <b>121.9</b>
----------------------	----------------------------------	-----------------------------------	-------------------------------	--------------------------



ELEV 305	<b>D</b> TDZE 305
----------	-------------------



CATEGORY	A	B	C	D
LNAV MDA	1160-1 855 (900-1)	1160-1¼ 855 (900-1¼)	1160-2½ 855 (900-2½)	855 (900-2½)
<b>C</b> CIRCLING	1160-1¼ 855 (900-1¼)	855 (900-1¼)	1160-2½ 855 (900-2½)	NA

PAC, 31 OCT 2024 to 26 DEC 2024

PAC, 31 OCT 2024 to 26 DEC 2024