

APP CRS	Rwy Idg	<b>10014</b>
<b>063°</b>	TDZE	<b>258</b>
	Apt Elev	<b>305</b>

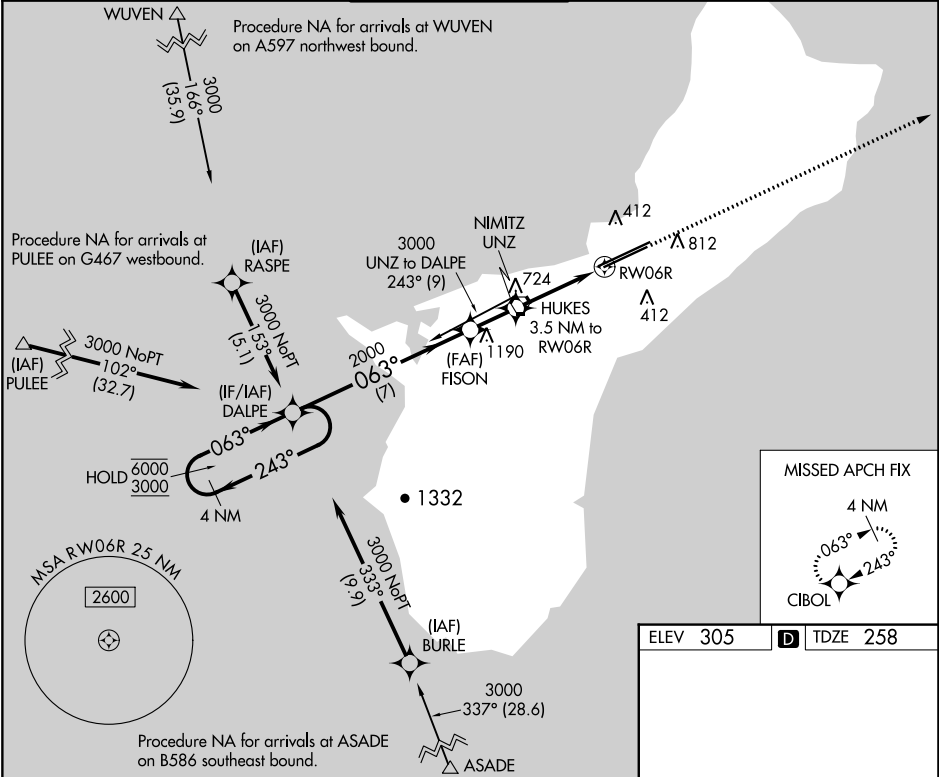
# RNAV (GPS) Y RWY 6R

GUAM INTL (GUM)(PGUM)

RNP APCH - GPS.  
 ▼ Rwy 6R helicopter visibility reduction below 3/4 SM NA. For inop ALS, increase Cat A and B visibility to 1 SM, and Cat C and D to 2 SM. Circling NA southeast of Rwy 6R-24L.

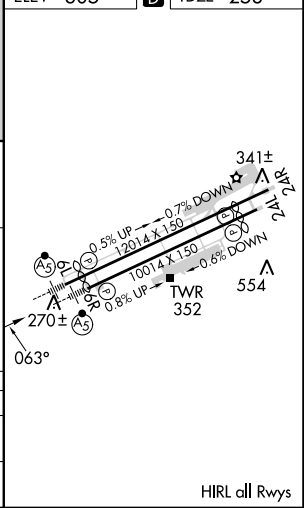
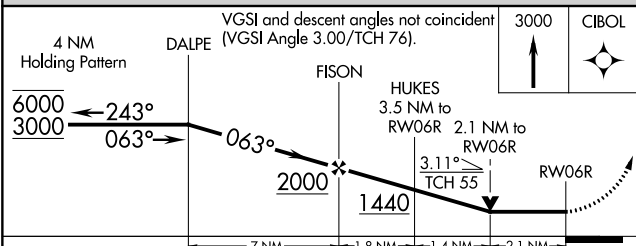
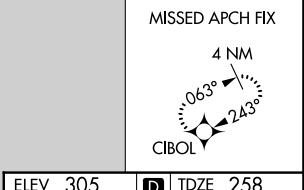
MALSR   
 MISSED APPROACH: Climb to 3000 direct CIBOL and hold.

ATIS	GUAM CERAP	AGANA TOWER	GND CON	CLNC DEL
<b>119.0</b>	<b>119.8 269.0</b>	<b>118.1 340.2</b>	<b>121.9 336.4</b>	<b>121.9</b>



PAC, 31 OCT 2024 to 26 DEC 2024

PAC, 31 OCT 2024 to 26 DEC 2024



CATEGORY	A	B	C	D
LNVA MDA	980-3/4	722 (700-3/4)	980-1 5/8	722 (700-1 5/8)
CIRCLING	980-1	675 (700-1)	980-2 675 (700-2)	NA

HIRL all Rwys