

YIGO, GUAM I, GUAM

ILS Z or LOC/DME Z RWY 24L

LOC I-PMY 110.1	APCH CRS 244°	Rwy Idg 11,200 TDZE 607 Arprt Elev 617
---------------------------	-------------------------	---

AL-2147 [USAF]

ANDERSEN AFB (PGUA)

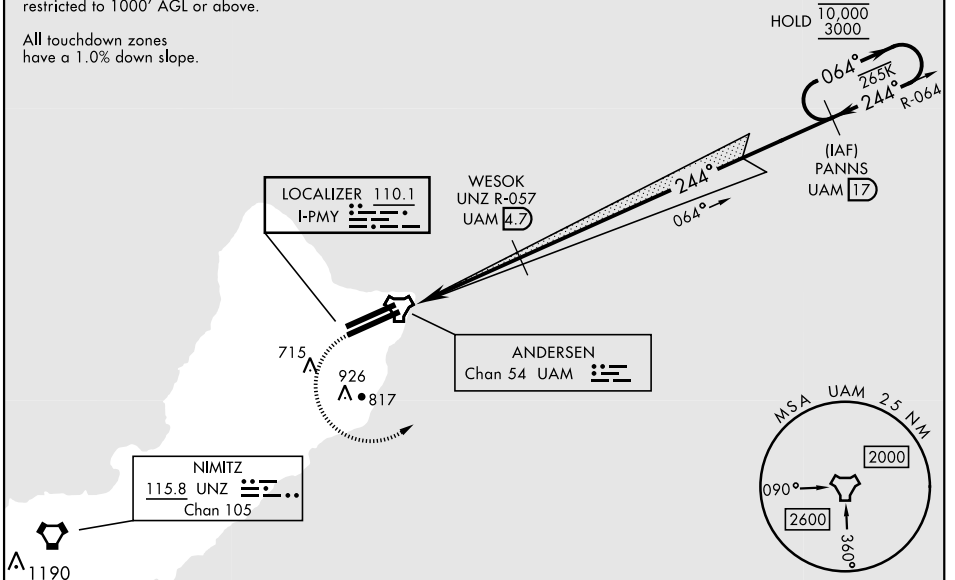
<p>▼ *When ALS inop, increase RVR to 45, vis to 1/8 mile. **When ALS inop, increase CAT AB RVR to 55, vis to 1 mile; CAT CDE RVR to 50, vis to 1 mile. *** Circling not authorized NW of Rwy 06L-24R.</p>	<p>SALS (A2)</p>	<p>MISSED APPROACH: Climb to 1200, then climbing left turn to 3000 to intercept UAM R-064 direct PANNS and hold.</p>
---	----------------------	--

ATIS 118.175 254.325	GUAM APP CON 119.8 269.0	TOWER 126.2 233.7	GND CON 121.7 275.8	CLNC DEL 126.725 256.7
--------------------------------	------------------------------------	-----------------------------	-------------------------------	----------------------------------

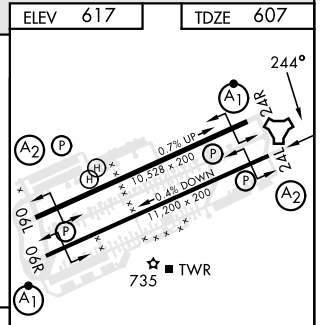
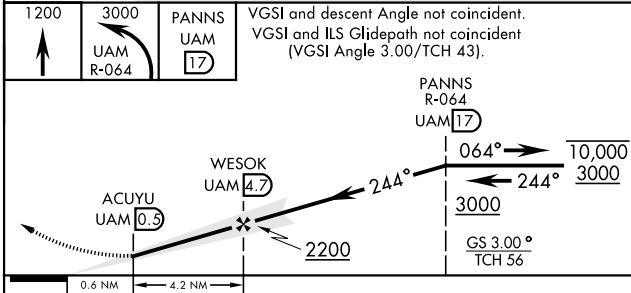
CAUTION: GS unusable below 900' MSL/300' AGL due to runway supervisory unit.

CAUTION: Environmentally Sensitive Area
Flights along Andersen cliffline restricted to 1000' AGL or above.

All touchdown zones have a 1.0% down slope.



EMERG SAFE ALT 100 NM 2900



ELEV 617	TDZE 607				
1200	3000	PANNS UAM 17	VGSI and descent Angle not coincident. VGSI and ILS Glidepath not coincident (VGSI Angle 3.00/TCH 43).		
ACUYU UAM 0.3	WESOK UAM 4.7	PANNS R-064 UAM 17			
0.6 NM	4.2 NM	10,000 / 3000	GS 3.00° TCH 56		
CATEGORY	A	B	C	D	E
S-ILS 24L*	900/40		293	(300-3/4)	
S-LOC 24L**	940/40	333 (400-3/4)	940/45	333 (400-7/8)	
*** CIRCLING	1060-1	1080-1	1240-1 3/4	1240-2	1240-2 1/4
	443 (500-1)	463 (500-1)	623 (700-1 3/4)	623 (700-2)	623 (700-2 1/4)
HIRL all rwys					

YIGO, GUAM I, GUAM

13° 35' N-144° 56' E

ANDERSEN AFB (PGUA)

Orig 12AUG21
TERPS

ILS Z or LOC/DME Z RWY 24L

PAC, 31 OCT 2024 to 26 DEC 2024

PAC, 31 OCT 2024 to 26 DEC 2024