

YIGO, GUAM I, GUAM

TACAN Y RWY 06R

VORTAC UNZ 115.8 Chan T05	APCH CRS 054°	Rwy ldg TDZE 11,200 557	Arprt Elev 617
---	-------------------------	---	--------------------------

-(USAF)

ANDERSEN AFB (PGUA)

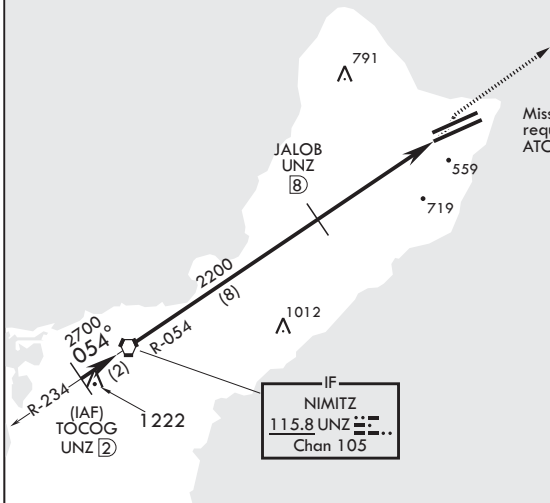
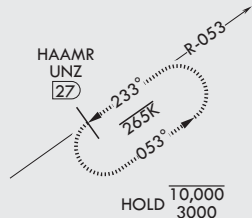
⚠ * When ALS inop, increase CAT AB RVR to 55, vis to 1 mile, CAT CDE vis to 1 3/8 miles.
** Circling not authorized NW of Rwy 6L-24R.

ALSF-1 MISSED APPROACH: Climb to 3000, intercept UNZ R-053 to HAAMR and hold.

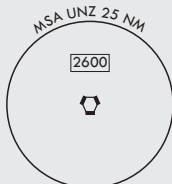
ATIS 118.175 254.325	GUAM APP CON/DEP CON 119.8 269.0	TOWER 126.2 233.7	GND CON 121.7 275.8	CLNC DEL 126.725 256.7
--------------------------------	--	-----------------------------	-------------------------------	----------------------------------

CAUTION: Environmentally Sensitive Area Flights along Anderson cliff line restricted to 1000' AGL or above.

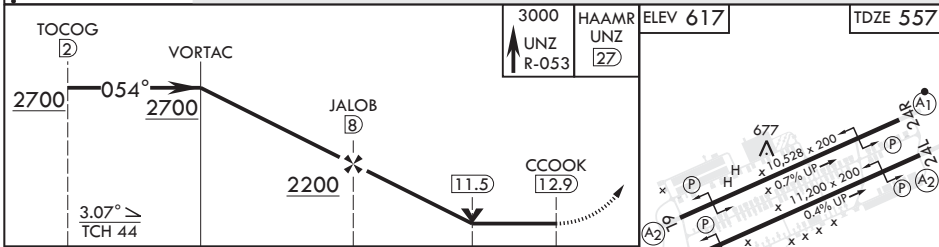
All touchdown zones have a 1.0% down slope.



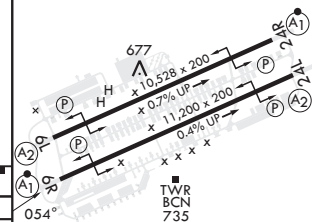
Missed approach requires use of RNAV or ATC radar monitoring.



1172 EMERG SAFE ALT 100 NM 2900



TOCOG UNZ 2700	VORTAC	JALOB UNZ 2200	CCOOK UNZ 11.5	HAAMR UNZ 27	ELEV 617	TDZE 557
CATEGORY		A	B	C	D	E
S-6R*		1060/24	503 (500-½)	1060/55	503	(500-1)
CIRCLING**		1060-1 443 (500-1)	1080-1 463 (500-1)	1240-1¾ 623 (700-1¾)	1240-2 623 (700-2)	1240-2¼ 623 (700-2¼)



YIGO, GUAM I, GUAM

13°35'N - 144°56'E

ANDERSEN AFB (PGUA)

Amdt 2 17JUN21
TERPS

TACAN Y RWY 06R

PAC, 31 OCT 2024 to 26 DEC 2024

PAC, 31 OCT 2024 to 26 DEC 2024