

WAKE ISLAND, WAKE ISLAND

# RNAV (GPS) RWY 28

APCH CRS 276°  
 Rwy Idg 9844  
 TDZE 20  
 Arpt Elev 23

-(USAF)

WAKE ISLAND AFLD (PWAJ)

RNP APCH-GPS

MISSED APPROACH: Climbing to 4000 direct DUPUF and hold. Continue climb-in-hold to 4000.

\* Circling not authorized N of Rwy 10-28.

WAKE OPS  
 128.0 349.4

CAUTION: Procedure in uncontrolled airspace. Uncontrolled airspace below 5500' AGL.

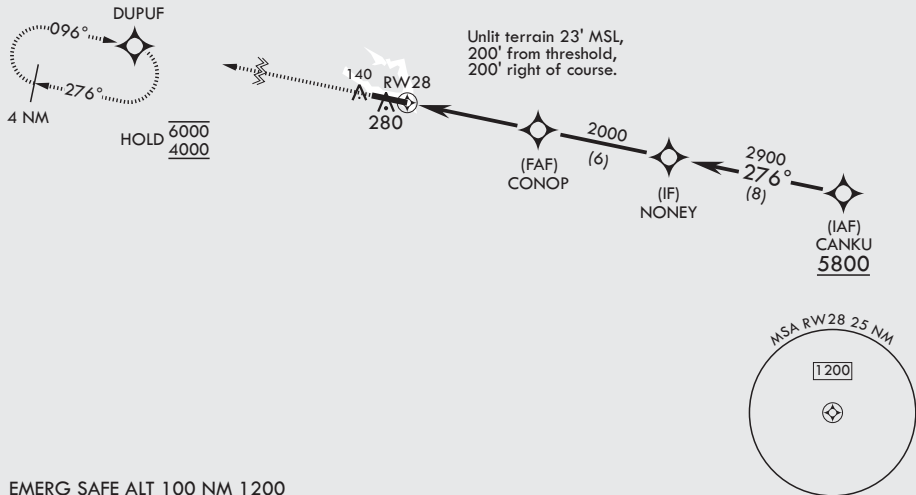
Contact Wake Island Operations for advisory services.

CAUTION: When Rwy 10 VGSI inop, circling to Rwy 10 not authorized at night.

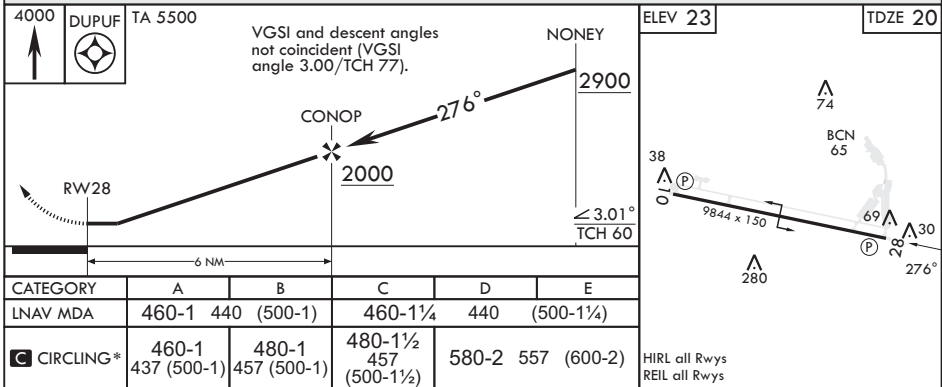
RWY 28 helicopter visibility reduction below 1 SM not authorized.

Straight-in Rwy 28 at night, operational VGSI required, remain on or above VGSI glidepath until threshold

USAF Only: When VGSI Inop, Straight-in Rwy 28 authorized at night with aircrew command approval.



EMERG SAFE ALT 100 NM 1200



WAKE ISLAND, WAKE ISLAND

19°17'N - 166°38'E

WAKE ISLAND AFLD (PWAJ)

Amdt 3 18APR24  
 TERPS

# RNAV (GPS) RWY 28

PAC, 31 OCT 2024 to 26 DEC 2024

PAC, 31 OCT 2024 to 26 DEC 2024