

APP CRS	Rwy Idg	<b>4500</b>
<b>053°</b>	TDZE	<b>29</b>
	Apt Elev	<b>29</b>

# RNAV (GPS) RWY 5

POINT LAY LRRS (PIZ)(PIIZ)

**33** -33°C DME/DME RNP- 0.3 NA. When local altimeter setting not received, procedure NA.

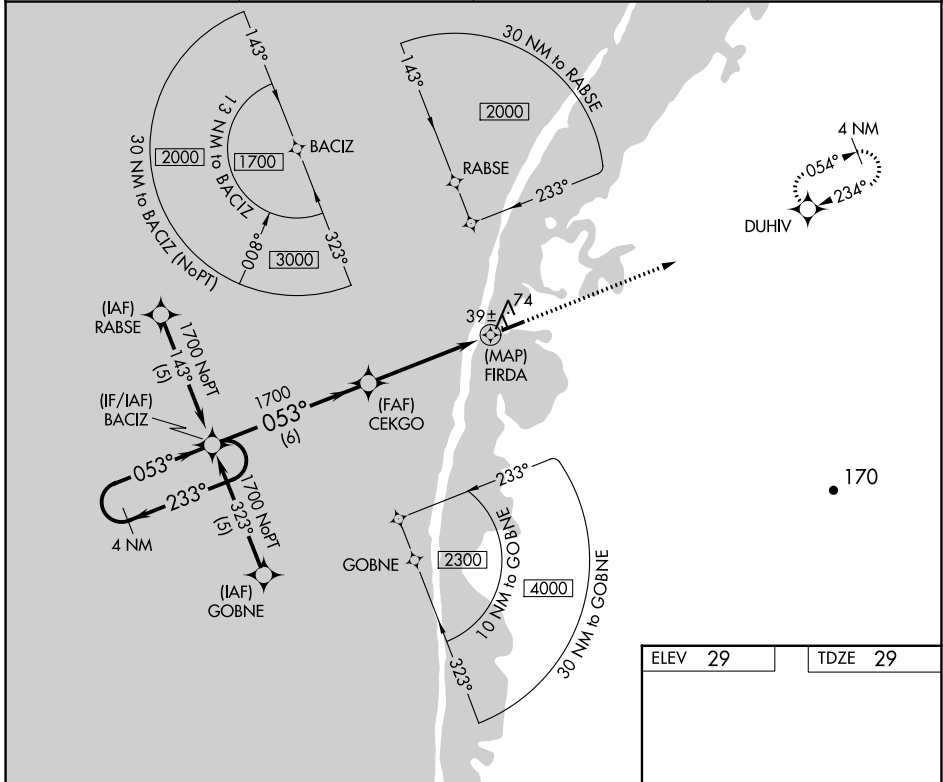
MISSED APPROACH: Climb to 2000 direct DUHIV and hold.

AWOS-3P  
**135.65**

ANCHORAGE CENTER  
**119.65 363.25**

BARROW RADIO  
**122.4**

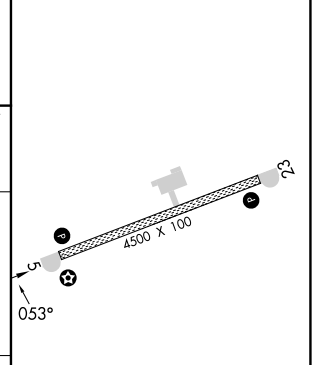
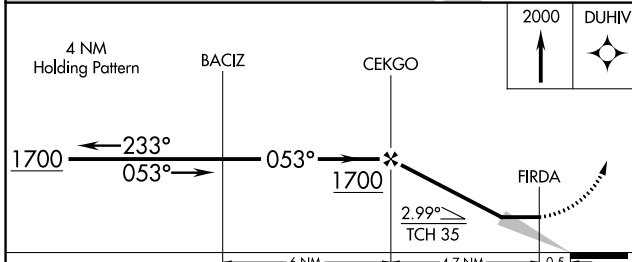
CTAF  
**122.8**



AK, 31 OCT 2024 to 26 DEC 2024

AK, 31 OCT 2024 to 26 DEC 2024

ELEV	29	TDZE	29
------	----	------	----



CATEGORY	A	B	C	D
LNVA MDA	380-1	351 (400-1)	380-1¼ 351 (400-1¼)	NA
CIRCLING	440-1 411 (500-1)	480-1 451 (500-1)	480-1½ 451 (500-1½)	NA

MIRL Rwy 5-23  
REIL Rlys 5 and 23