

23334

[USAF]

CAPE LISBURNE LRRS (PALU)

GRAAY FOUR DEPARTURE (RNAV) (GRAAY4• JAPKI)

CAPE LISBURNE, ALASKA

ANCHORAGE CENTER APP/DEP CON
119.65 363.25
KOTZEBUE RADIO
122.3
CTAF 0
126.2

RNAV1- GPS

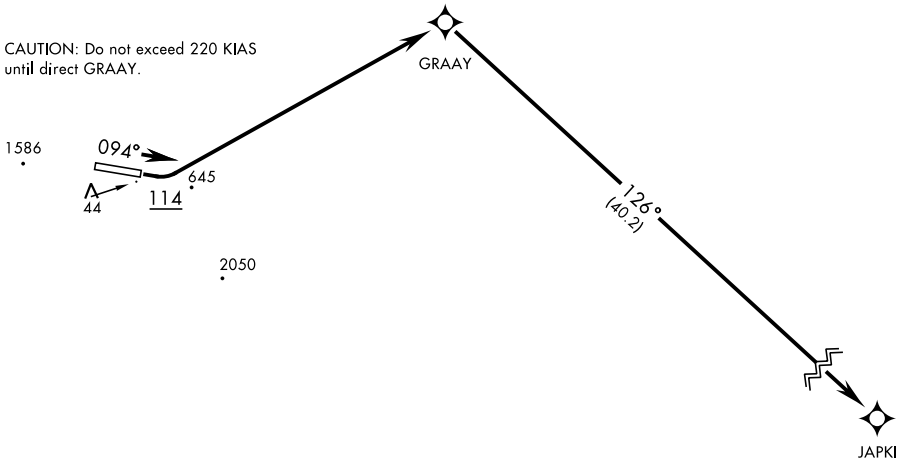
Rwy	Knots	60	120	180	240	300	360
9	V/V(fpm)	362	724	1086	1448	1810	2172

Minimum climb gradient to 600

NOT FOR CIVIL USE

FOR USE BY MILITARY CERTIFIED AIRCREWS OR AUTHORIZED CONTRACT AIRCRAFT ONLY

CAUTION: Do not exceed 220 KIAS until direct GRAAY.



WARNING: High terrain within 2 NM of departure end of runway. Prompt compliance with departure instructions is essential to flight safety. Do not delay initial turn at 114'.

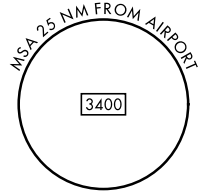
Use of T228 airway requires aircraft to be equipped with TSO-145a/146a capability.

Night operations not authorized.

Procedure NA for CAT E aircraft.

Uncontrolled Airspace below 700' AGL within 7 NM of Cape Lisburne airport.

Takeoff minimums: Rwy 9, standard with minimum climb or 362H/NM to 600'.



AK, 31 OCT 2024 to 26 DEC 2024

AK, 31 OCT 2024 to 26 DEC 2024



DEPARTURE ROUTE DESCRIPTION

TAKEOFF RWY 9: Climb on heading 094° to 114, then climbing left turn direct GRAAY, then track 126° to JAPKI, maintain 8000 or as assigned by ATC.

TAKEOFF RWY 27: NOT AUTHORIZED

GRAAY FOUR DEPARTURE (RNAV) (GRAAY4• JAPKI)

CAPE LISBURNE, ALASKA

Orig 30NOV23

CAPE LISBURNE LRRS (PALU)