

NDB/DME LUR 385 Chan 20 (Y)	APCH CRS 235°	Rwy Idg THRE N/A Arprt Elev 14
---	-------------------------	---

[USAF]

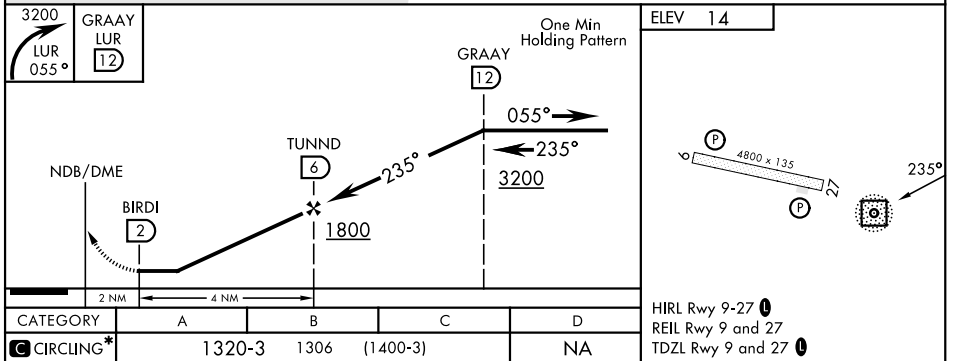
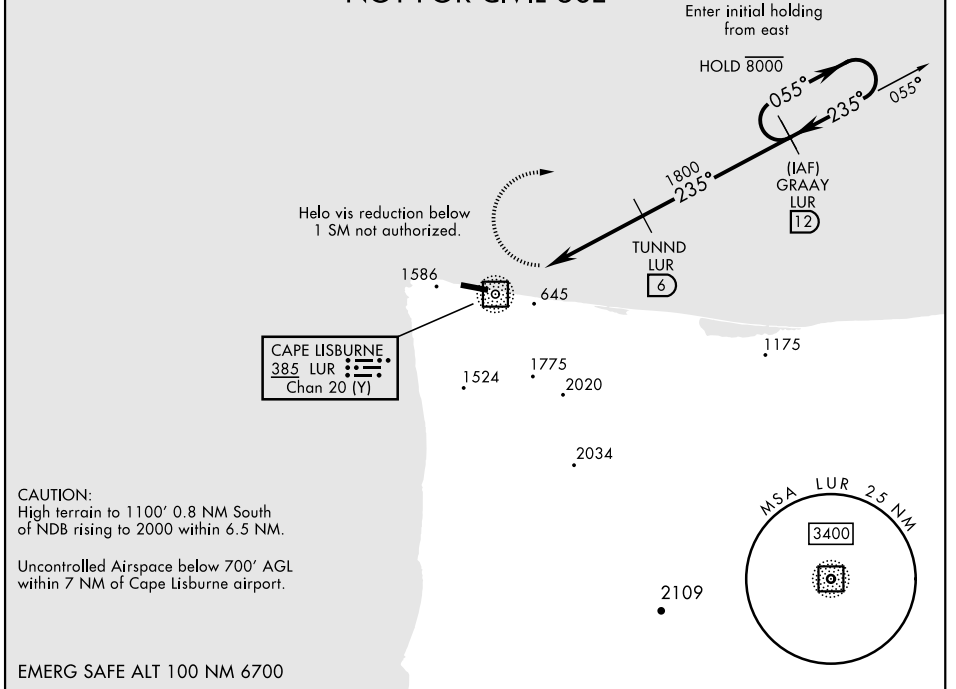
CAPE LISBURNE LRRS (PALU)

▼ *Circling not authorized S of Rwy 9-27.
Night operations not authorized.

MISSED APPROACH: Climbing right turn to 3200, intercept LUR 055° bearing to GRAAY and hold.

ANCHORAGE CENTER APP/DEP CON 119.65 363.25	KOTZEBUE RADIO 122.3	CTAF 126.2 ①
--	--------------------------------	------------------------

MILITARY CERTIFIED
AIRCREWS OR AUTHORIZED
CONTRACT AIRCRAFT ONLY
NOT FOR CIVIL USE



CATEGORY	A	B	C	D
☑ CIRCLING*	1320-3	1306 (1400-3)		NA

ELEV 14

HIRL Rwy 9-27 ①
REIL Rwy 9 and 27
TDZL Rwy 9 and 27 ①

AK, 31 OCT 2024 to 26 DEC 2024

AK, 31 OCT 2024 to 26 DEC 2024