

# RNAV (GPS) RWY 27

APCH CRS	Rwy ldg	4800
258°	THRE	14
	Arpt Elev	14

[USAF]

CAPE LISBURNE LRRS (PALU)

RNP APCH - GFS	MISSED APPROACH: (Do not exceed 220 KIAS until turn completion). Climbing right turn to 3200 direct TAKME and hold.
----------------	--

ANCHORAGE CENTER/DEP CON <b>119.65 363.25</b>	KOTZEBUE RADIO <b>122.3</b>	CTAF <b>126.2 0</b>
--	--------------------------------	------------------------

**MILITARY CERTIFIED  
AIRCRAFTS OR AUTHORIZED  
CONTRACT AIRCRAFT  
ONLY**

**NOT FOR CIVIL USE**

Helo vis reduction below 1 SM not authorized.  
Uncontrolled Airspace below 700' AGL within 7 NM of Cape Lisburne airport.

Unlit weather equipment,  
168' MSL, 278' from thld,  
19' right of course.

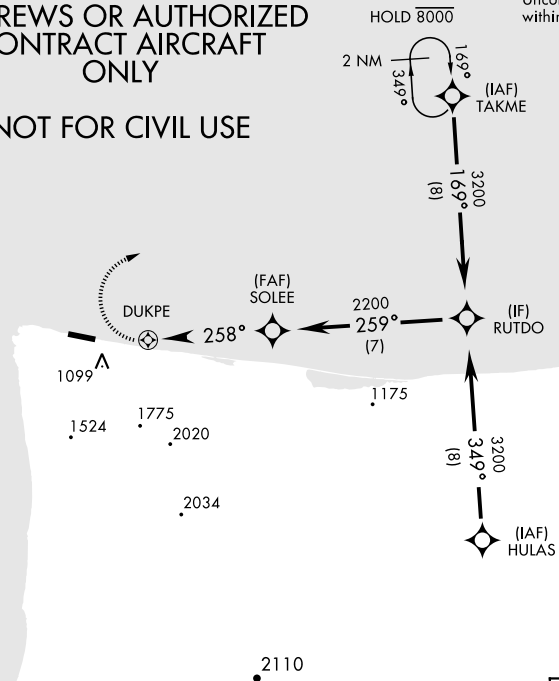
Terrain 630' MSL,  
1.88 NM from thld,  
1159' left of course.

Terrain 31' MSL,  
200' from thld,  
200' left of course.

Terrain 30' MSL,  
244' from thld,  
172' left of course.

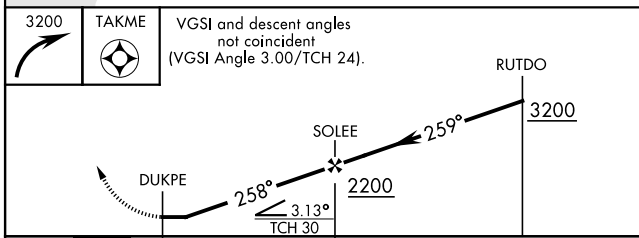
Terrain 597' MSL,  
1.91 NM from thld,  
1118' left of course.

AK, 31 OCT 2024 to 26 DEC 2024



AK, 31 OCT 2024 to 26 DEC 2024

EMERG SAFE ALT 100 NM 6700



ELEV	14	THRE	14
------	----	------	----

CATEGORY	A	B	C	D
LNVA MDA	1320-2½ 1306 (1400-2½)		1320-3 1306 (1400-3)	NOT AUTHORIZED
CIRCLING*	1320-2½ 1306 (1400-2½)		1320-3 1306 (1400-3)	NOT AUTHORIZED

The diagram shows runway 27 with dimensions of 4800 x 135 feet. It includes a circling symbol and a heading of 258 degrees. Below the diagram, the following information is provided:

- HIRL Rwy 9-27 0
- REIL Rwy 9 and 27
- TDZL Rwy 9 and 27 0

# RNAV (GPS) RWY 27