

# RNAV (GPS) RWY 35

APCH CRS	Rwy Idg	4200
348°	TDZE	1476
	Arprt Elev	1565

[USAF]

SPARREVOHN LRRS (PASV)

RNP APCH - GPS

▼ Night operations not authorized.  
Circling not authorized.

MISSED APPROACH: Climbing right turn to 5500 direct LIVME and hold.

ANCHORAGE CENTER 134.3 351.8	KENAI RCO 122.5	UNICOM 126.2 (CTAF)	AWOS-3
---------------------------------	--------------------	------------------------	--------

Visibility reduction by helicopters not authorized.

**MILITARY CERTIFIED AIRCEW OR  
AUTHORIZED CONTRACT AIRCRAFT ONLY**  
**NOT FOR CIVIL USE**

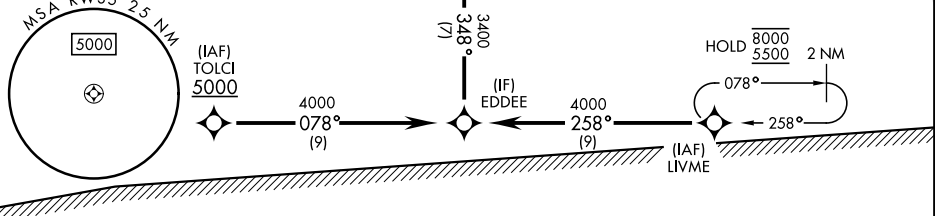
Uncontrolled airspace below 700 AGL within 3 NM of Sparrevohn Airport.

Procedure NA when MOA 1782 (NAKNEK 2 MOA) is active unless coordination with Anchorage Center is completed.

CAUTION: Rwy surrounded by mountains.  
Rwy located on slope of 3236' mountain.  
Approach from S only, land Rwy 35 only.

CAUTION: Terrain 1530' MSL, 2773' from thld, 1008' left of course.

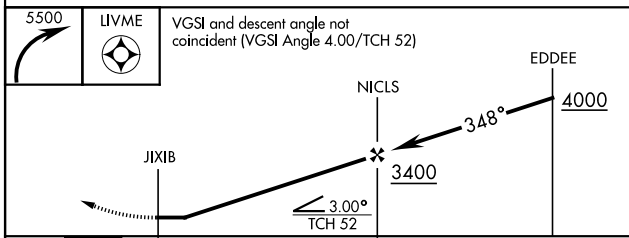
Terrain 1756' MSL, 1.1 NM from thld, 850' right of crs.  
Terrain 1389' MSL, 200' from thld, 200' left of crs.  
Terrain 1753' MSL, 1.2 NM from thld, 1217' left of crs.  
Terrain 1369' MSL, 200' from thld, at centerline.



AK, 31 OCT 2024 to 26 DEC 2024

AK, 31 OCT 2024 to 26 DEC 2024

EMERG SAFE ALT 100 NM 13,700	ELEV 1565	TDZE 1476
	Land Rwy 35	
	Takeoff Rwy 17	



ELEV 1565	TDZE 1476
Land Rwy 35	
Takeoff Rwy 17	
REIL Rwy 35	35

CATEGORY	A	B	C	D
RNAV MDA	3220-1¼ 1744 (1700-1¼)	3380-1½ 1904 (1900-1½)	3460-3 1984 (1900-3)	NOT AUTHORIZED
CIRCLING	NOT AUTHORIZED			

# RNAV (GPS) RWY 35