

JEKLI THREE DEPARTURE (OBSTACLE) (RNAV) (JEKLI3.DELRY)

TIN CITY, ALASKA

UNICOM (CTAF) [USAF] RNAV1 - GPS
 126.2
 TIN CITY RCO (NOME RADIO)
 122.6
 ANCHORAGE CENTER
 133.3 290.4

Rwy	Knots	60	120	180	240	300	360
35	V/V(fpm)	357	714	1071	1428	1785	2142

Minimum Climb Rate to 800

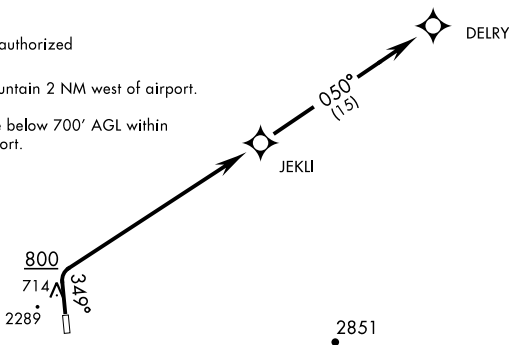
**MILITARY CERTIFIED
 AIRCREW OR AUTHORIZED
 CONTRACT AIRCRAFT ONLY**

NOT FOR CIVIL USE

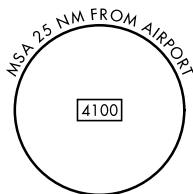
Night operations not authorized

CAUTION: 2289' mountain 2 NM west of airport.

Uncontrolled airspace below 700' AGL within 7 NM of Tin City airport.



WARNING: High terrain within 2 NM of departure end of runway requiring prompt compliance with departure procedure instructions; do not delay start of initial turn.



DEPARTURE ROUTE DESCRIPTION

TAKEOFF RWY 17: NA

TAKEOFF RWY 35: Climb heading 349° to 800, then right turn direct JEKLI, then track 050° to DELRY. Maintain 7000 or ATC assigned altitude.

AK, 31 OCT 2024 to 26 DEC 2024

AK, 31 OCT 2024 to 26 DEC 2024