

# NDB/DME RWY 35

NDB/DME TNC <b>347</b> Chan <b>119 (Y)</b>	APCH CRS <b>343°</b>	Rwy Idg TDZE Arprt Elev <b>4702</b> <b>273</b> <b>273</b>
--	-------------------------	--

[USAF]

TIN CITY LRRS (PATC)

▼ \* Circling not authorized W of Rwy 17-35.  
Night operations not authorized.

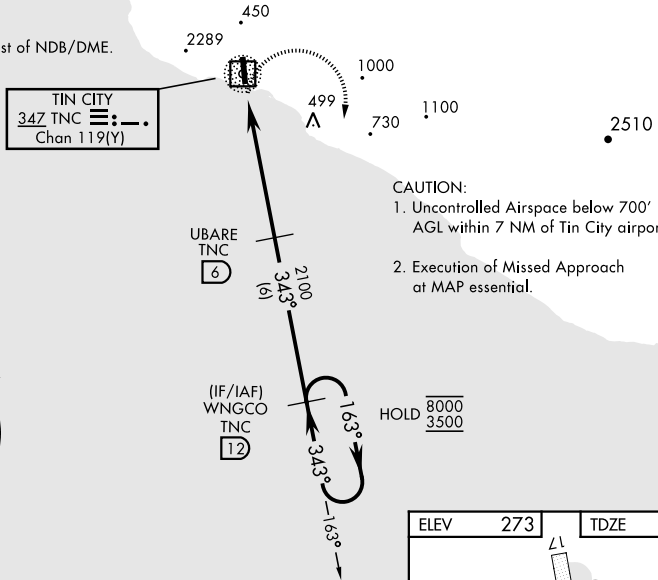
MISSED APPROACH: Climbing right turn to 3600 intercept TNC 163° bearing to WNGCO and hold.  
Continue climb-in-hold to 3600.

ANCHORAGE CENTER <b>133.3 290.4</b>	TIN CITY RCO (NOME RADIO) <b>122.6</b>	UNICOM <b>126.2 (CTAF)</b>
--	---	-------------------------------

**MILITARY CERTIFIED  
AIRCREWS OR AUTHORIZED  
CONTRACT AIRCRAFT ONLY**

**NOT FOR CIVIL USE**

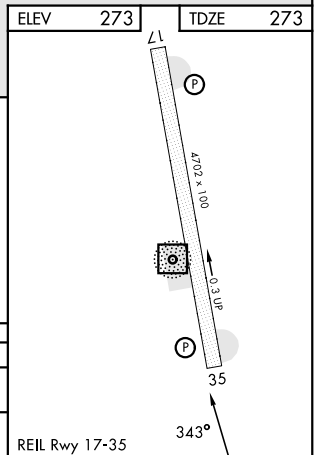
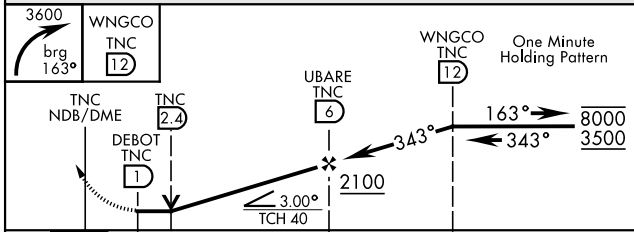
CAUTION:  
2289' mountain 2 NM West of NDB/DME.



AK, 31 OCT 2024 to 26 DEC 2024

AK, 31 OCT 2024 to 26 DEC 2024

EMERG SAFE ALT 100 NM 7000



CATEGORY	A	B	C	D
S-35	980-1 707 (800-1)		980-2 707 (800-2)	NOT AUTHORIZED
◼ CIRCLING*	980-1 707 (800-1)		980-2 707 (800-2)	NOT AUTHORIZED

REIL Rwy 17-35

# NDB/DME RWY 35