

RNAV (GPS) RWY 35

APCH CRS	Rwy Idg	4702
349°	TDZE	273
	Arpt Elev	273

[USAF]

TIN CITY LRSS (PATC)

RNP APCH-GPS

▼ Night operations not authorized.
* Circling not authorized W of Rwy 17-35.

MISSED APPROACH: Climb to 1500 then climbing right turn to 4000 direct JAGMA and hold.

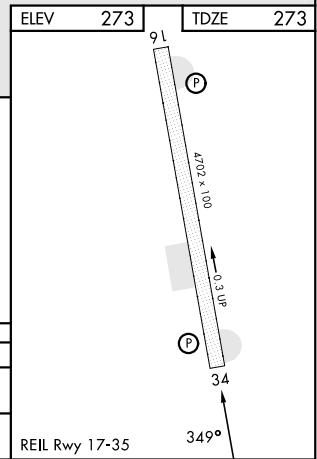
ANCHORAGE CENTER
133.3 290.4

TIN CITY RCO (NOME RADIO)
122.6

UNICOM
126.2 (CTAF)



1500	4000	JAGMA	JASOB	
↑	↪			
2.1 NM to GLNCO		HOMAM	JASOB 3000	
GLNCO		349°	1900	
1 NM		3.00° TCH 40		
4.1 NM				
CATEGORY	A	B	C	D
LNAV MDA	1260-1¼ 987 (1000-1¼)	1260-1½ 987 (1000-1½)	1280-3 1007 (1100-3)	NA
CIRCLING*	1260-1¼ 987 (1000-1¼)	1260-1½ 987 (1000-1½)	1280-3 1007 (1100-3)	NA



AK, 31 OCT 2024 to 26 DEC 2024

AK, 31 OCT 2024 to 26 DEC 2024

RNAV (GPS) RWY 35