

RNAV (GPS) RWY 25

-(USAF)

INDIAN MOUNTAIN LRRS (PAIM)

APCH CRS 247°	Rwy Idg 4100
	TDZE 1161
	Arprt Elev 1261

RNP APCH-GPS MISSED APPROACH: Climbing left turn to 7000 direct CHAZY and hold. Continue climb in hold to 7000.

ANCHORAGE CENTER 124.6 352.0	CTAF 126.2	FAIRBANKS RADIO 122.6
--	----------------------	---------------------------------

Night operations not authorized.

Uncontrolled airspace below 700' AGL within 4 NM of Indian Mountain airport.

AWOS-3

NOT FOR CIVIL USE

▲
4313

▲
2016

RW25

▲
2800

247° (7)

(FAF) DARTN

▲
2002

2800

247° (7)

(IAF) FODUV
7000

4500
157° (8)

(IF) FATUR

▲
1989

4500
331° (8)

(IAF) CHAZY
7000

099°

279°

4 NM

157°

331°

2 NM

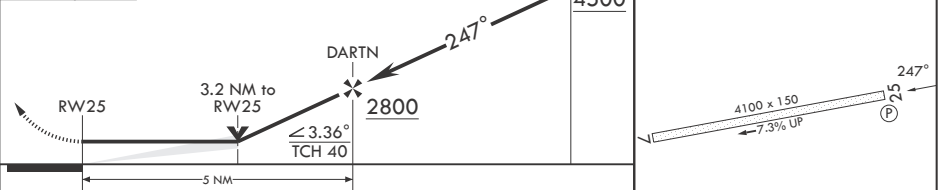
MSA RW25 25 NM

5500

MILITARY CERTIFIED AIRCREWS OR AUTHORIZED CONTRACT AIRCRAFT ONLY

EMERG SAFE ALT 100 NM 10,100

7000 CHAZY	VGSI and descent angles not coincident (VGSI angle 4.00/TCH 40).	PAPI beyond 8° right of RCL unusable.	FATUR	ELEV 1261	TDZE 1161
------------	--	---------------------------------------	-------	-----------	-----------



CATEGORY	A	B	C	D
LNAV MDA	2360-1¼ 1199 (1100-1¼)	2360-1½ 1199 (1100-1½)	NA	
CIRCLING	NOT AUTHORIZED			

REIL Rwy 25

RNAV (GPS) RWY 25

AK, 31 OCT 2024 to 26 DEC 2024

AK, 31 OCT 2024 to 26 DEC 2024