

RNAV (GPS) RWY 11

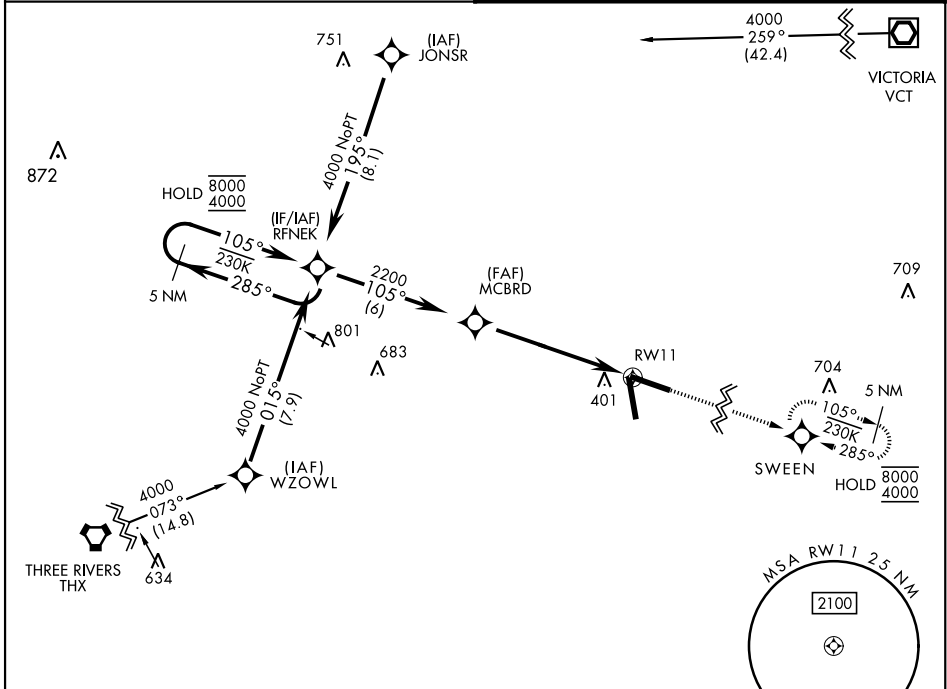
| | | |
|----------|------------|------|
| APCH CRS | Rwy Idg | 8000 |
| 105° | TDZE | 318 |
| | Arprt Elev | 322 |

[USN]

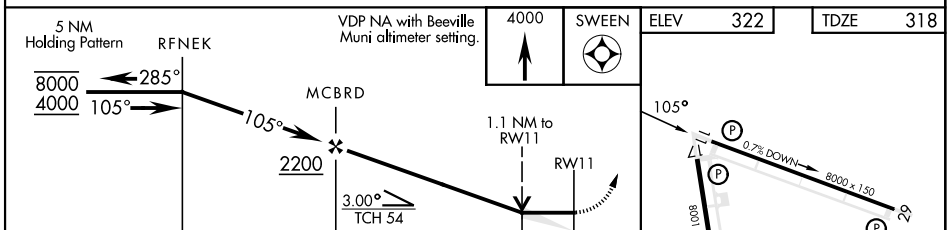
GOLIAD NOLF (KNGT)

RNP APCH MISSED APPROACH: Climb to 4000 direct SWEEN and hold, continue climb-in-hold to 4000.
When local altimeter setting not received, use Beeville Muni altimeter setting.

ASOS **353.675** CTAF **132.875 307.075**



US Navy Training Wing Four Use Only
EMERG SAFE ALT 100 NM 11,100



| CATEGORY | A | B | C | D |
|--|----------------------|----------------------|------------------------|----------------------|
| LNAV MDA | 720-1 | 402 (400-1) | 720-1½ | 402 (400-1½) |
| C CIRCLING | 800-1 478 (500-1) | 820-1 498 (500-1) | 820-1½ 498 (500-1½) | 880-2 558 (600-2) |
| BEEVILLE MUNI ALTIMETER SETTING MINIMA | | | | |
| LNAV MDA | 760-1 | 442 (500-1) | 760-1¾ | 442 (500-1¾) |
| C CIRCLING | 800-1 478 (500-1) | 820-1 498 (500-1) | 820-1½ 498 (500-1½) | 880-2 558 (600-2) |

| | | | |
|------|-----|------|-----|
| ELEV | 322 | TDZE | 318 |
|------|-----|------|-----|

RNAV (GPS) RWY 11

SC-3, 28 NOV 2024 to 26 DEC 2024

SC-3, 28 NOV 2024 to 26 DEC 2024