

# RNAV (GPS) RWY 17

APCH CRS **166°** Rwy Idg **8001**  
 TDZE **322**  
 Arpt Elev **322**

[USN]

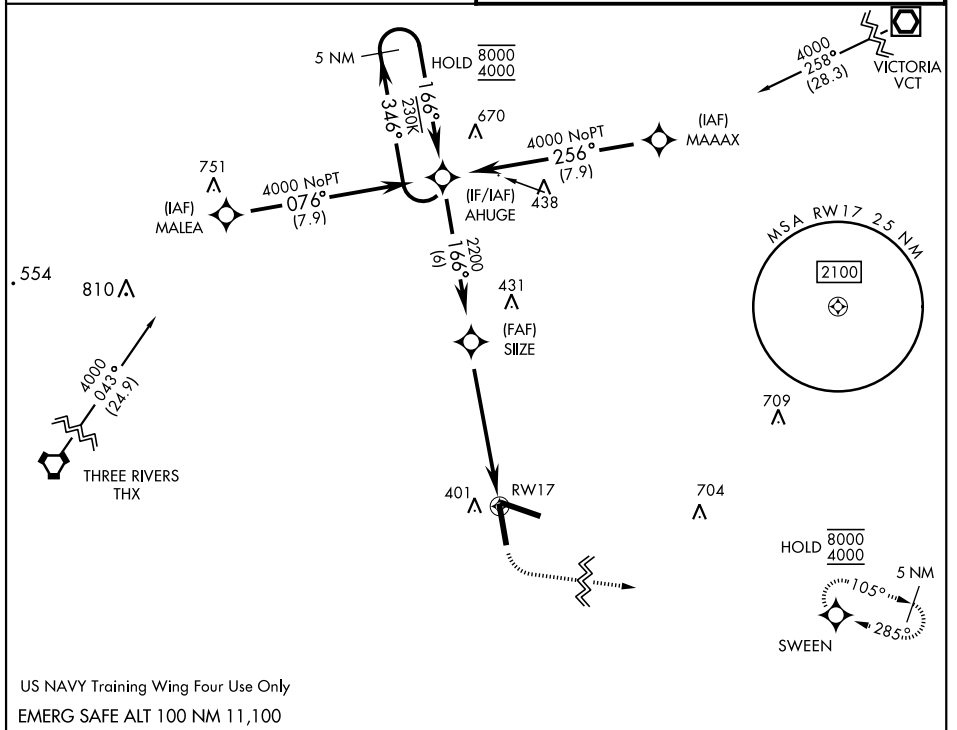
GOLIAD NOLF (KNGT)

RNP APCH  
 When local altimeter setting not received, use Beeville Muni altimeter setting.

MISSED APPROACH: Climb to 900 then climbing left turn to 4000 direct SWEENEY and hold, continue climb-in-hold to 4000.

ASOS  
**353.675**

CTAF  
**132.875 307.075**



SC-3, 28 NOV 2024 to 26 DEC 2024

SC-3, 28 NOV 2024 to 26 DEC 2024

US NAVY Training Wing Four Use Only  
 EMERG SAFE ALT 100 NM 11,100

5 NM Holding Pattern AHUGE	VDP NA with Beeville Muni altimeter setting.	900	4000	SWEENEY	ELEV 322	TDZE 322
CATEGORY	A	B	C	D		
LNAV MDA		640-1	318	(400-1)		
CIRCLING	760-1 438 (500-1)	780-1 458 (500-1)	780-1½ 458 (500-1½)	880-2 558 (600-2)		
BEEVILLE MUNI ALTIMETER SETTING MINIMA						
LNAV MDA		680-1	358	(400-1)		
CIRCLING	800-1 478 (500-1)	820-1 498 (500-1)	820-1½ 498 (500-1½)	880-2 558 (600-2)		

# RNAV (GPS) RWY 17