

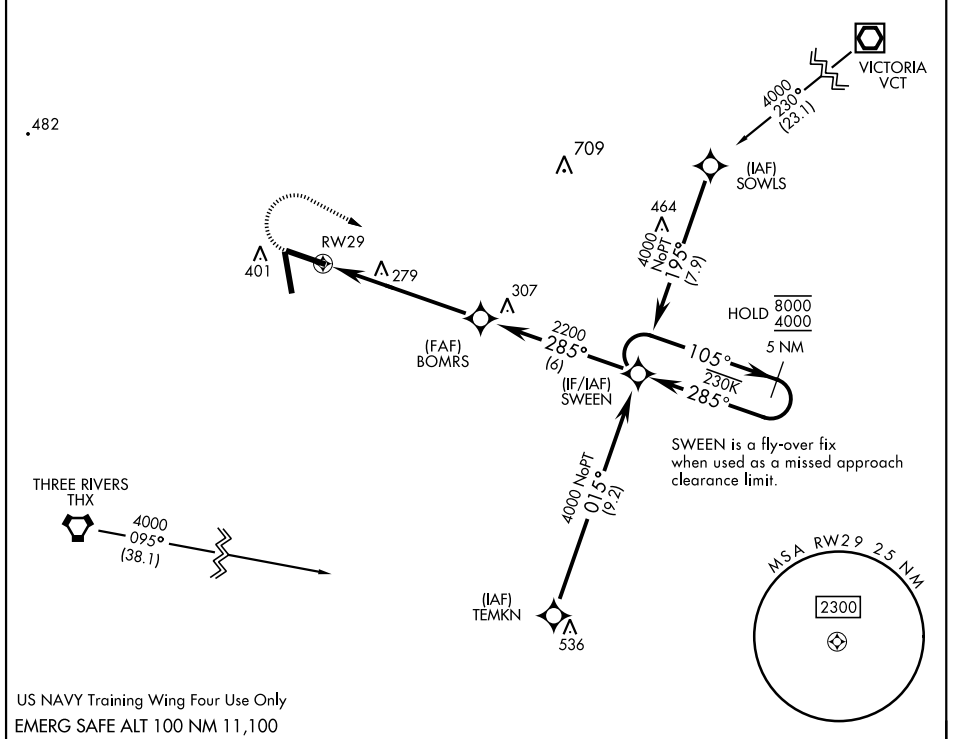
RNAV (GPS) RWY 29

APCH CRS	Rwy Idg	8000
285°	TDZE	285
	Arprt Elev	322

[USN]

GOLIAD NOLF (KNGT)

RNP APCH	MISSED APPROACH: Climb to 900 then climbing right turn to 4000 direct SWEEN and hold, continue climb-in-hold to 4000.
When local altimeter setting not received, use Beeville Muni altimeter setting.	
ASOS 353.675	CTAF 132.875 307.075



US NAVY Training Wing Four Use Only
EMERG SAFE ALT 100 NM 11,100

<p>VDP NA with Beeville Muni altimeter setting.</p>	<p>5 NM Holding Pattern</p>	ELEV 322	TDZE 285	
CATEGORY	A	B	C	D
LNAV MDA	580-1 295		(300-1)	
CIRCLING	760-1 438 (500-1)	780-1 458 (500-1)	780-1½ 458 (500-1½)	880-2 558 (600-2)
BEEVILLE MUNI ALTIMETER SETTING MINIMA				
LNAV MDA	640-1 355 (400-1)			
CIRCLING	800-1 478 (500-1)	820-1 498 (500-1)	820-1½ 498 (500-1½)	880-2 558 (600-2)
HIRL Rwy 11-29, 17-35 TDZL Rwy 11, 29, 17, 35				

RNAV (GPS) RWY 29

SC-3, 28 NOV 2024 to 26 DEC 2024

SC-3, 28 NOV 2024 to 26 DEC 2024