

# RNAV (GPS) RWY 35

APCH CRS	Rwy Idg	8001
346°	TDZE	307
	Arpt Elev	322

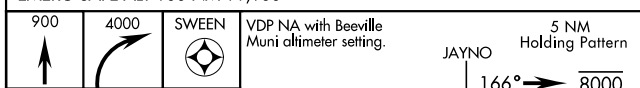
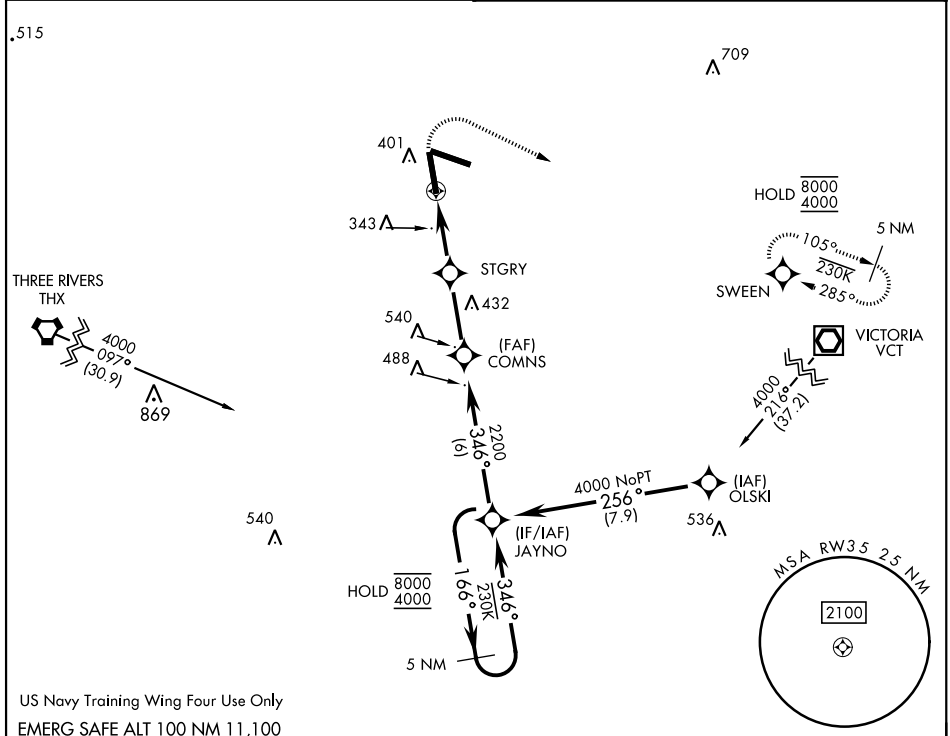
[USN]

GOLIAD NOLF (KNGT)

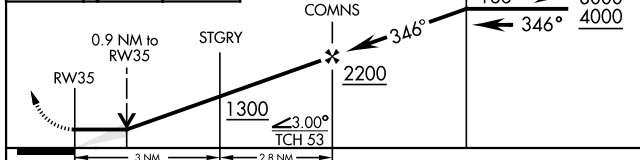
RNP APCH  
When local altimeter setting not received, use Beeville Muni altimeter setting.

MISSED APPROACH: Climb to 900 then climbing right turn to 4000 direct SWEEN and hold, continue climb-in-hold to 4000.

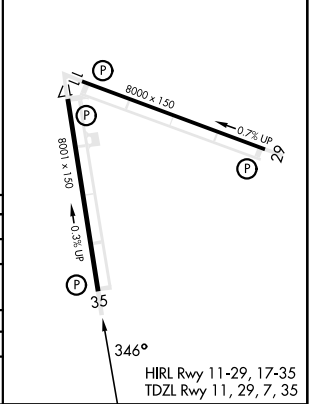
ASOS <b>353.675</b>	CTAF <b>132.875 307.075</b>
------------------------	--------------------------------



ELEV	322	TDZE	307
------	-----	------	-----



CATEGORY	A	B	C	D
LNAV MDA	620-1 313 (300-1)			
CIRCLING	760-1	780-1	780-1½	880-2
	438 (500-1)	458 (500-1)	458 (500-1½)	558 (600-2)
BEEVILLE MUNI ALTIMETER SETTING MINIMA				
LNAV MDA	660-1 353 (400-1)			
CIRCLING	800-1	820-1	820-1½	880-2
	478 (500-1)	498 (500-1)	498 (500-1½)	558 (600-2)



# RNAV (GPS) RWY 35

SC-3, 28 NOV 2024 TO 26 DEC 2024

SC-3, 28 NOV 2024 TO 26 DEC 2024