

NORTH, SOUTH CAROLINA

RNAV (GPS) RWY 6

APCH CRS 061°	Rwy Idg 9003 TDZE 281 Arprt Elev 321
-------------------------	---

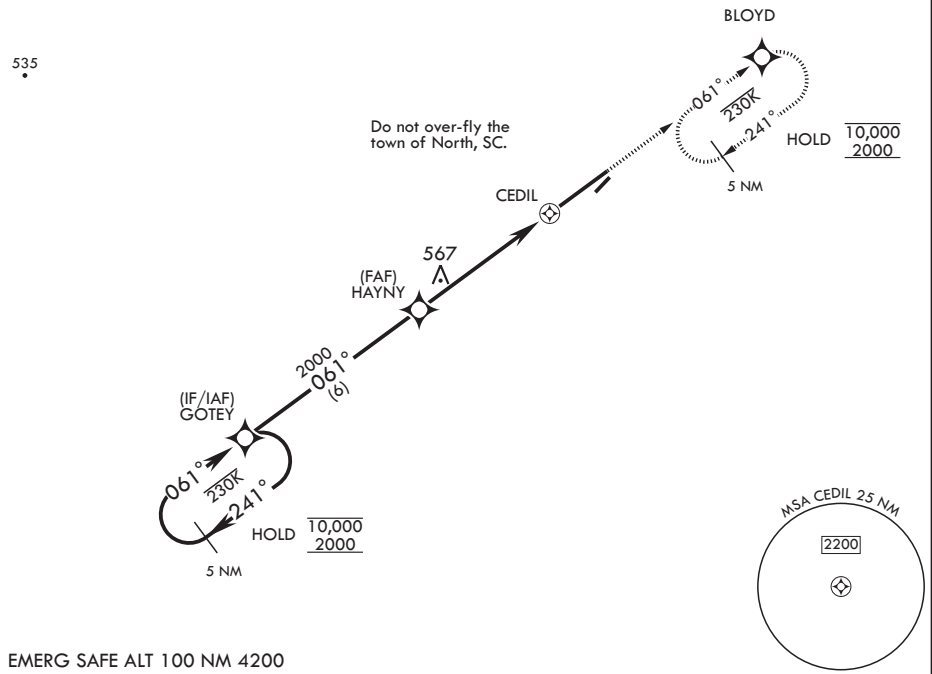
AL-3017 (USAF)

NORTH AF AUX (KXNO)

RNP APCH. ▼ * Circling NA to Assault Strip.	MISSED APPROACH: Climb to 2000 direct BLOYD and hold.
--	---

ASOS 118.525	COLUMBIA APP CON/DEP CON 124.15 338.2	LZ/DZ OPS FAC 120.475 235.775
------------------------	---	---

CAUTION: Uncontrolled airspace below 700 ft AGL.



EMERG SAFE ALT 100 NM 4200

<p>5 NM Holding Pattern</p> <p>10,000 ← 241° GOTEY → 061° → 2000 HAYNY → 2000</p> <p>3.16° ≥ TCH 50</p>		<p>2000 BLOYD ELEV 321 TDZE 281</p> <p>Rwy 6 Idg 9003' Rwy 24 Idg 8999'</p>			
<p>1 NM to CEDIL</p> <p>4.5 NM 0.5 NM</p>					
CATEGORY	A	B	C	D	E
LNAV MDA	880-1 599 (600-1)	880-1 599 (600-1)	880-1 599 (600-1)	880-1 599 (600-1)	880-1 599 (600-1)
CIRCLING*	940-1 619 (700-1)	940-1 619 (700-1)	940-1 619 (700-1)	1400-3 1079 (1100-3)	

NORTH, SOUTH CAROLINA
Amdt 3 29DEC22

33°37'N - 81°05'W

NORTH AF AUX (KXNO)

RNAV (GPS) RWY 6

SE-2, 28 NOV 2024 to 26 DEC 2024

SE-2, 28 NOV 2024 to 26 DEC 2024