

VORTAC CAE <b>114.70</b> Chan <b>94</b>	APCH CRS <b>186°</b>	Rwy ldg TDZE Arprt Elev <b>N/A</b> <b>N/A</b> <b>321</b>
---	-------------------------	---

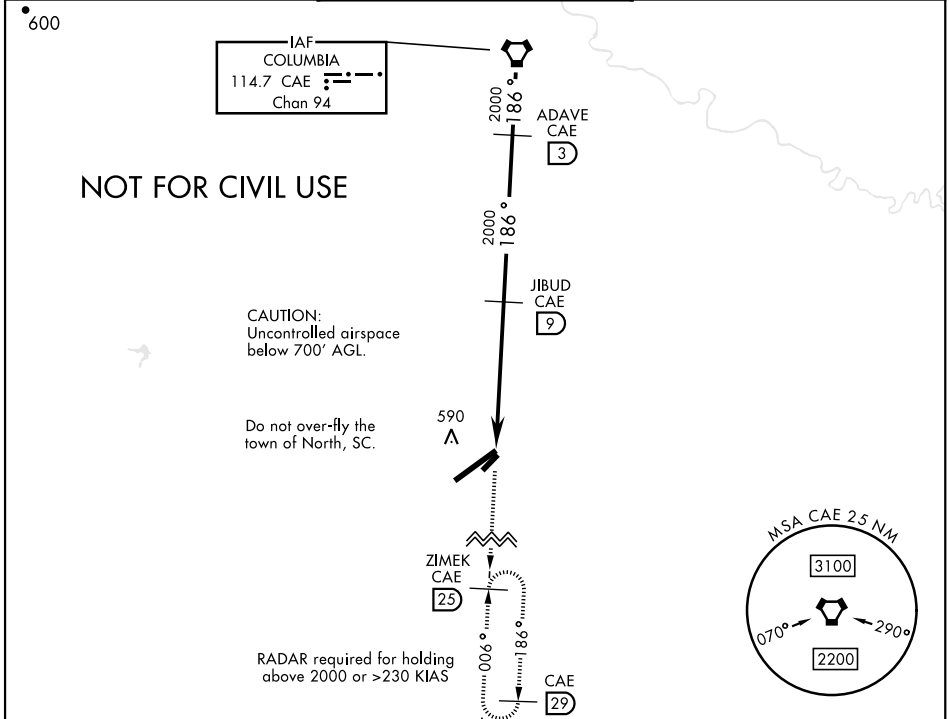
[USAF]

# VOR or TACAN A

NORTH AF AUX (KXNO)

**▼** \*Circling NA to Assault Strip. MISSED APPROACH: Climb to 2000 via CAE VORTAC R-186 to ZIMEK and hold as published.

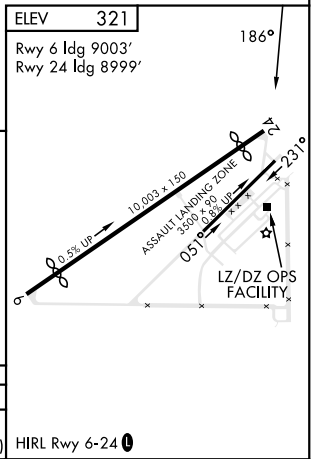
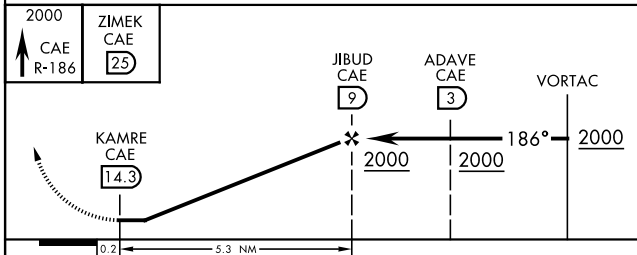
ASOS (KOGB) <b>118.525</b>	LZ/DZ OPS FACILITY <b>120.475 0 235.775</b>	COLUMBIA APP CON <b>124.15 338.2</b>
-------------------------------	--	---



SE-2, 28 NOV 2024 to 26 DEC 2024

SE-2, 28 NOV 2024 to 26 DEC 2024

EMERG SAFE ALT 100 NM 4800



CATEGORY	A	B	C	D	E
<b>C</b> CIRCLING *	NOT AUTHORIZED		940-1¾ 619 (700-1¾)	1000-2¼ 679 (700-2¼)	1000-2½ 679 (700-2½)

HIRL Rwy 6-24 0

# VOR or TACAN A