

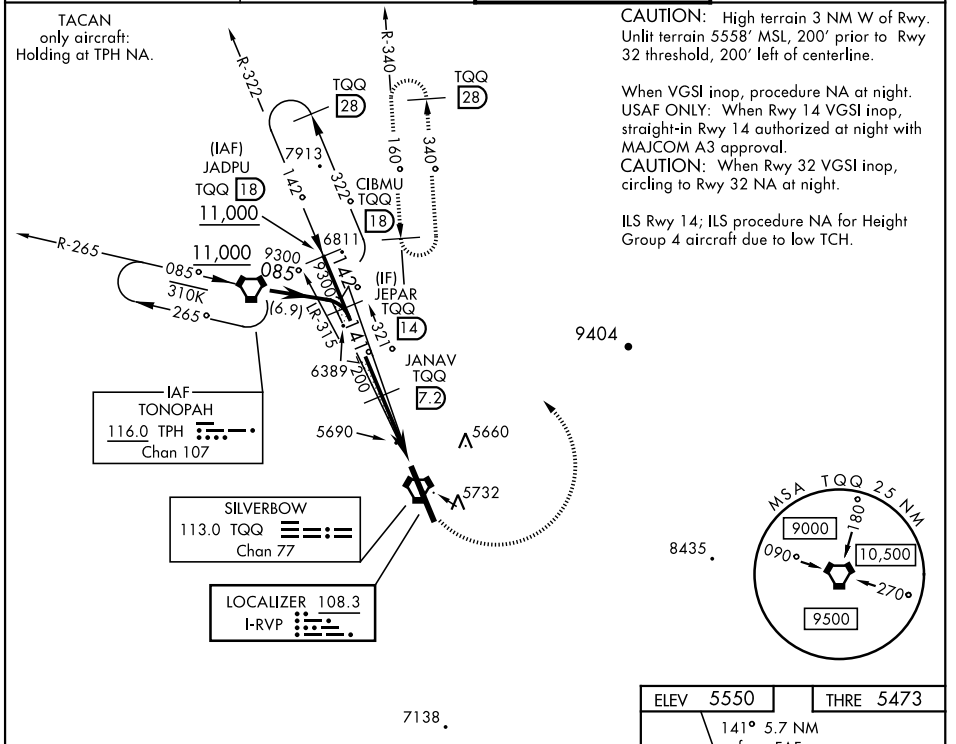
# ILS or LOC/DME RWY 14

LOC I-RVP <b>108.3</b>	APCH CRS <b>141°</b>	Rwy Ldg THRE 12,001 5473 Arprt Elev 5550	AL-3188 [USAF]	TONOPAH TEST RANGE (KTNX)
---------------------------	-------------------------	--	----------------	---------------------------

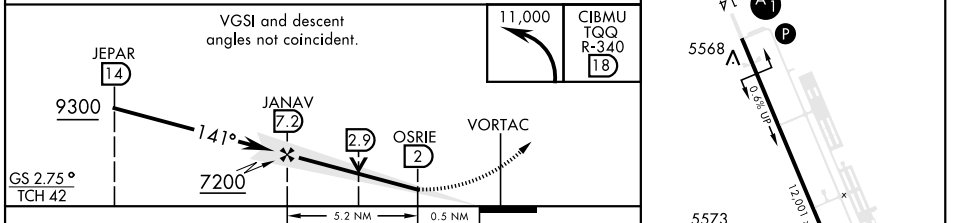
▼ \*When ALS inop, increase vis to ¼ mile.  
 \*\*When ALS inop, increase CAT AB vis to 1 mile, CAT CDE to 1½ miles.  
 \*\*\*Circling not authorized W of Rwy 14-32.

ALSF-1 	MISSED APPROACH: Turn left climbing to 11,000 via TQQ R-340 to CIBMU and hold, continue climb-in-hold to 11,000.
------------	--

AWOS <b>113.0</b>	NELLIS CONTROL <b>119.35 254.4</b>	SILVERBOW TOWER* <b>124.75 257.95</b>	GND CON <b>127.25 335.5</b>
----------------------	---------------------------------------	--	--------------------------------



EMERG SAFE ALT 100 NM 16,600



CATEGORY	A	B	C	D	E
S-ILS 14*	5673 - ½		200	(200-½)	
S-LOC 14**	5960-½ 487 (500-½)		5960-1	487	(500-1)
CIRCLING***	6040-1 490 (500-1)		6040-1½ 490 (500-1½)	6100-2 550 (600-2)	

HIRL Rwy 14-32

TONOPAH, NEVADA 37°47'N - 116°47'W TONOPAH TEST RANGE (KTNX)

# ILS or LOC/DME RWY 14

SW-4, 28 NOV 2024 to 26 DEC 2024

SW-4, 28 NOV 2024 to 26 DEC 2024