

VOR/DME Z RWY 14

VORTAC TQQ 113.0 Chan 77	APCH CRS 145°	Rwy Idg THRE 5473 Arprt Elev 5550
--	-------------------------	---

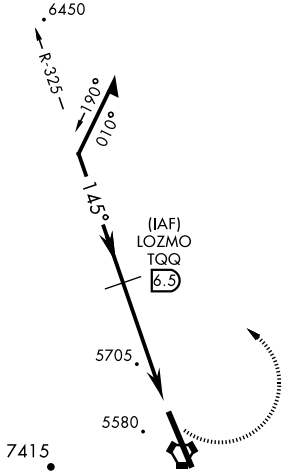
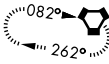
AL-3188 [USAF]

TONOPAH TEST RANGE (KTNX)

<p>V * Circling not authorized W of Rwy 14-32.</p>	<p>ALSIF-1</p>	<p>MISSED APPROACH: Turn left, climb to 11,000 direct to TPH VORTAC and hold. Continue climb in holding to 11,000.</p>
---	----------------	--

<p>AWOS 113.0</p>	<p>NELLIS CONTROL 119.35 254.4</p>	<p>SILVERBOW TOWER* 124.75 257.95 0</p>	<p>GND CON 127.25 335.5</p>
------------------------------	---	---	--

TONOPAH
116.0 TPH
Chan 107



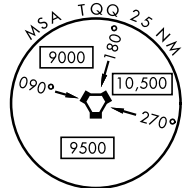
When VGSI inop, procedure NA at night.

USAF ONLY: When Rwy 14 VGSI inop, straight-in Rwy 14 authorized at night with MAJCOM A3 approval.

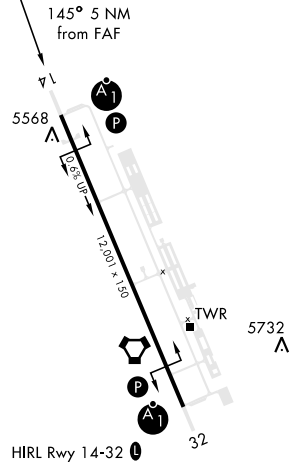
CAUTION: When Rwy 32 VGSI inop, circling to Rwy 32 NA at night.

CAUTION: High terrain 3 NM W of Rwy. Unlit terrain 5558' MSL, 200' prior to Rwy 32 threshold, 200' left of centerline.

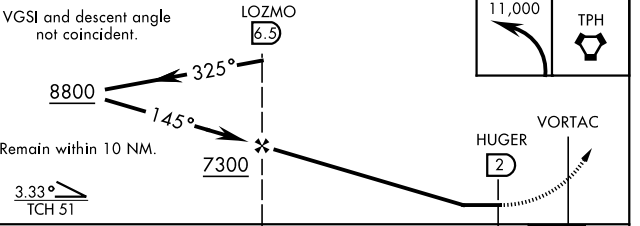
SILVERBOW
113.0 TQQ
Chan 77



ELEV 5550	THRE 5473
-----------	-----------



EMERG SAFE ALT 100 NM 16,600 FROM TQQ



CATEGORY	A	B	C	D	E
S-14	5960/24 487 (500-1/2)		5960/50 487 (500-1)	NOT AUTHORIZED	
C CIRCLING*	6040-1 490 (500-1)		6040-1 1/2 490 (500-1 1/2)	NOT AUTHORIZED	

VOR/DME Z RWY 14

SW-4, 28 NOV 2024 to 26 DEC 2024

SW-4, 28 NOV 2024 to 26 DEC 2024